



ACT  
PREP

READING





# Power Up: Reading ACT Prep, Week 2

Finding Main Ideas and Supporting Details



**K20**  
L•E•A•R•N



# Essential Question

How can I increase my ACT score?



# Learning Objectives

- Identify the genre, type, and purpose of a reading passage.
- Identify the main idea, supporting details, and evidence of a text.

# Always, Sometimes, or Never True

*The ACT reading test is divided into four passages.*



# Always True

- There will **always** be four reading passages.
- The test is 35 minutes.
- There are 40 questions.



# Always, Sometimes, or Never True

*The reading portion of the ACT asks questions about the reading passage as a whole.*



# Sometimes True

- Questions on the reading section will be about the passage as a whole as well as about specific portions of the passage.





# Always, Sometimes, or Never True

*Before each passage, the ACT will give you the author's name, the source of the passage, and important details about the passage.*



# Sometimes True

- The ACT always gives the author's name and the source but only sometimes gives important information about the passage.
- Make sure to always read this information just in case there is helpful information for answering the questions.



# Great Depression Passage: Genres

- Review the information provided at the top of the passage.
- Is the passage:
  - Fiction 
  - Nonfiction 

# Great Depression Passage: Types of Passage

Is the passage a:

- Literary Narrative 
- Social Science 
- Humanities 
- Natural Science 

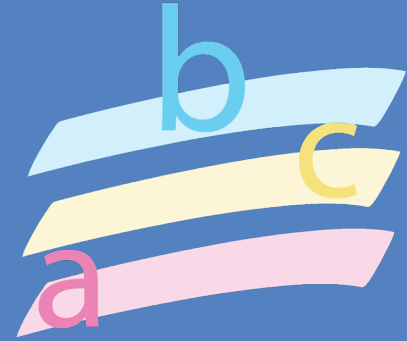
# Great Depression Passage: Purpose

Is the purpose of the passage to:

- Persuade 
- Inform 
- Entertain 

# Great Depression Passage: Identifying

- Read the passage and highlight in different colors:
  - The **main idea** of the passage
  - **Supporting details** of the passage
  - **Evidence** that supports the details



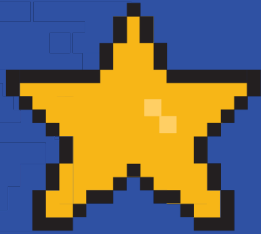
# Great Depression Passage Questions

- Answer the ACT-style questions about the passage.
- Refer back to the reading passage to answer the questions.

# Great Depression Passage Answers

1. B
2. E
3. C
4. G
5. A





# You Powered Up!



**K20**  
L•E•A•R•N