

## SPYING OUT SPECIFICS

**Instructions:** For each table, graph, or figure, highlight any titles, legends/keys, independent variables, and dependent variables. Circle any other parts that help you to understand the data.

**Table 1. Catfish Sizes**

*Average mass and length of Giant catfish at different sites along the Mekong River*

Location	Length (cm)	Mass (kg)
Site A	75	90
Site B	200	250
Site C	120	150
Site D	155	200

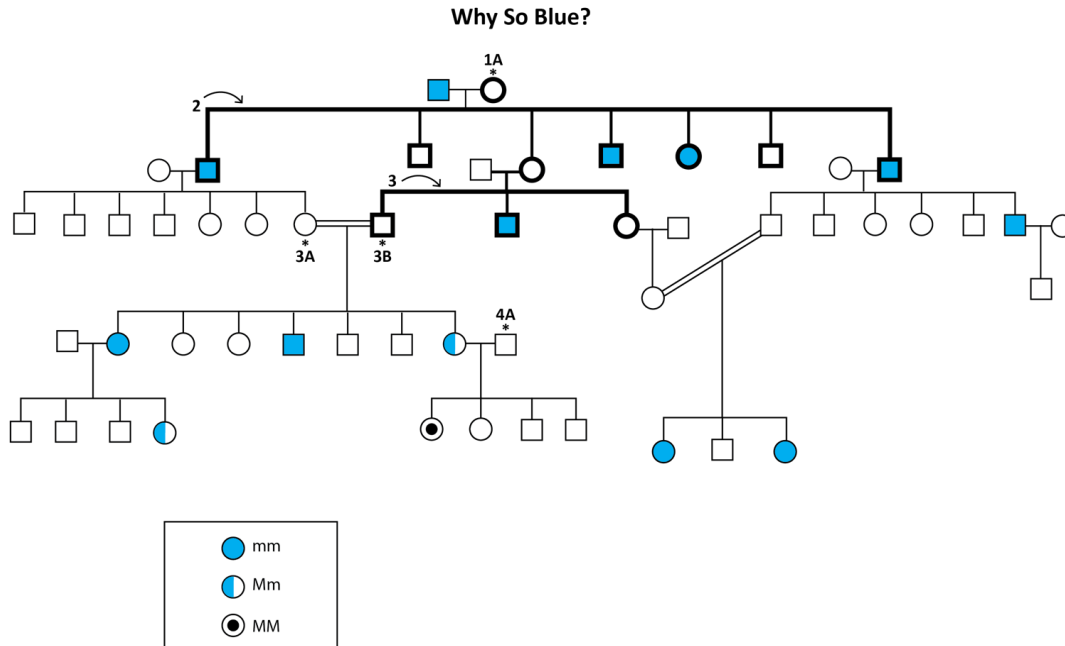
**Table 2. Light from Flames**

*Properties of Light*

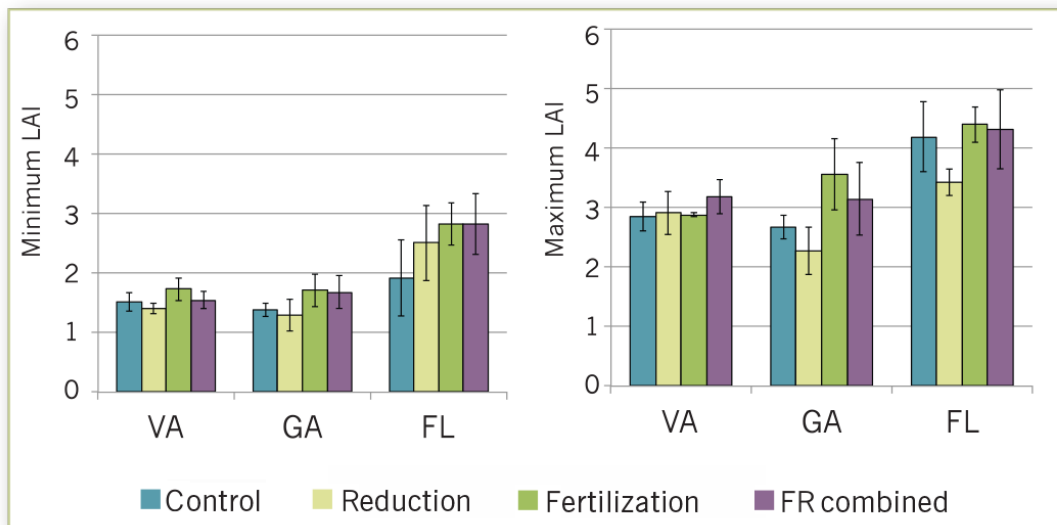
Speed (m/s)	Energy (x10 <sup>-21</sup> J)	Wavelength (nm)	Color
3.00 x 10 <sup>8</sup>	269-318	625-740	Red
3.00 x 10 <sup>8</sup>	318-337	590-625	Orange
3.00 x 10 <sup>8</sup>	337-352	565-590	Yellow
3.00 x 10 <sup>8</sup>	352-382	520-565	Green
3.00 x 10 <sup>8</sup>	382-452	440-520	Blue
3.00 x 10 <sup>8</sup>	452-523	380-440	Violet

## Figure 1. Fugate Genetic Family Tree

The Fugate family tree. Recessive gene traits caused a number of people to have blue skin in Kentucky.



## Figure 2. Leaf Area Index



Mean leaf area index for sites in Virginia, Georgia, and Florida.

PINEMAP. Pine Integrated Network: Education, Migration, and Adaptation Project. (2014). *Using the Tier III Experiments to Investigate the Effects of Drought and Fertilization on Forest Water Use and Stomatal Conductance*. [http://www.pinemap.org/reports/annual-reports/Year\\_3\\_Annual\\_Report.pdf](http://www.pinemap.org/reports/annual-reports/Year_3_Annual_Report.pdf)