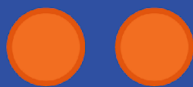


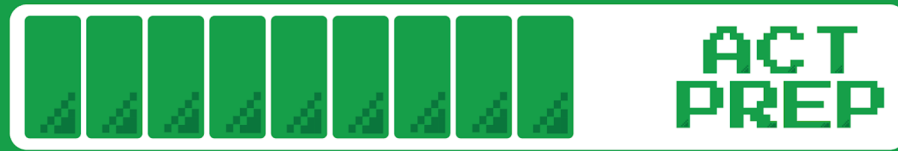


A large orange rectangle with a dark blue border. Inside, the text "ACT PREP" is written in large, white, pixelated letters. Below it, the word "SCIENCE" is written in green, pixelated letters, flanked by two sets of three vertical green bars. The top-left corner of the orange area has a pixelated, fading effect.



Power Up: Science ACT Prep, Week 9

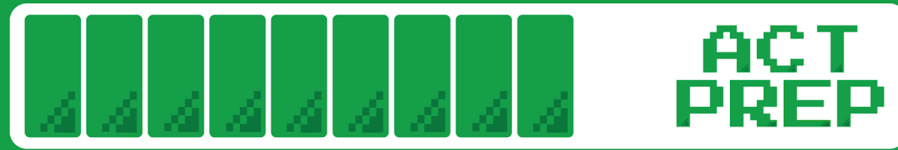
Scientific Opinions





Essential Question

How can I increase my ACT score?



K20
L•E•A•R•N

Learning Objectives

- Identify when two scientists have differences of opinion
- Determine what differences of opinion and methods can have on results

For the Birds

Scientist 1

Bluebird migration is inherently genetic. We have seen little change in the timing or speed of migration in recent years. The predicted locations for migration based on environmental factors are not always correct. This is evidence that outside factors have less influence than the bird's natural instincts.

Scientist 2

Bluebird migration is highly dependent upon environmental factors such as climate and available habitat. In recent years we have seen evidence of migration patterns shifting south. This appears to be due more to environmental factors than changes in genetics.

For the Birds

Which scientist would expect increased migration if a factory was built near nesting grounds?

- A) Scientist 1 because there has been a change in environment.
- B) Scientist 1 because the birds have genetically adapted.
- C) Scientist 2 because there has been a change in environment.
- D) Scientist 2 because the birds have genetically adapted.

For the Birds

Which scientist would expect increased migration if a factory was built near nesting grounds?

- A) Scientist 1 because there has been a change in environment.
- B) Scientist 1 because the birds have genetically adapted.
- C) Scientist 2 because there has been a change in environment.
- D) Scientist 2 because the birds have genetically adapted.

For the Birds

Which argument of Scientist 1 supports that environment may not play a factor?

- A) The predicted locations for migration based on environmental factors are not always correct.
- B) Bluebird migration is inherently genetic.
- C) We have seen little change in the timing or speed of migration.
- D) Outside factors have less influence than the bird's natural instincts.

For the Birds

Which argument of Scientist 1 supports that environment may not play a factor?

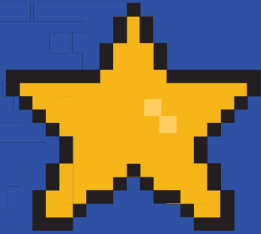
- A) The predicted locations for migration based on environmental factors are not always correct.
- B) Bluebird migration is inherently genetic.
- C) We have seen little change in the timing or speed of migration.
- D) Outside factors have less influence than the bird's natural instincts.



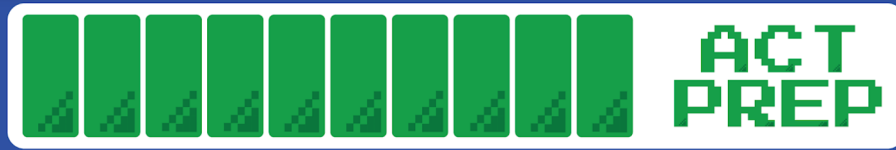
Practice Passage



20-Minute Timer



You Powered Up!



K20
L•E•A•R•N