

## EMBRYO CARD SORTS

### Set A, Embryos:



Mouse



Snake



Cat



Human



Chicken



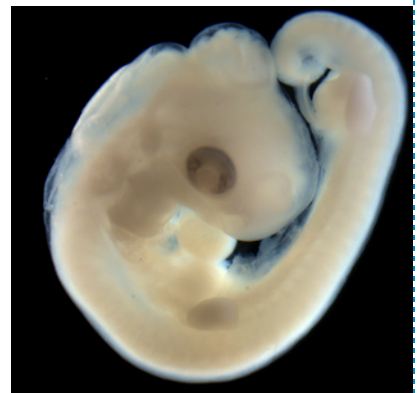
Elephant



Finch



Turtle



Alligator



Horse



Rabbit



Salamander



Shark



Anolis Lizard



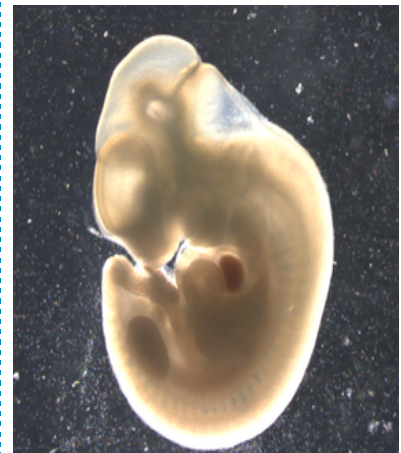
Bat



Zebra Fish



Kangaroo



Chimpanzee

Set B, Fully Developed Animals:



Mouse



Snake



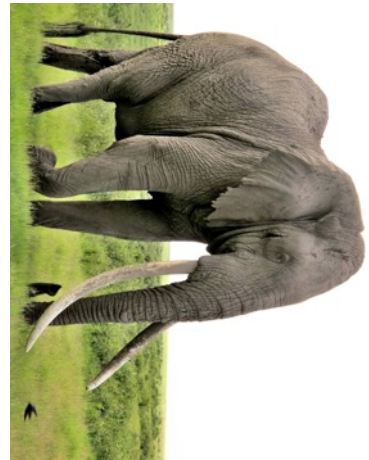
Cat



Human



Chicken



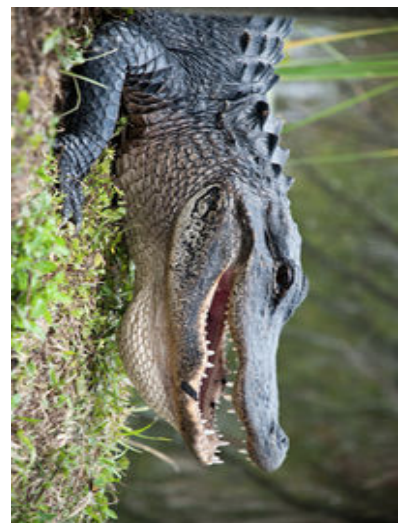
Elephant



Finch Bird



Turtle



Alligator



Horse



Rabbit



Salamander



Shark



Anolis Lizard



Bat



Zebra Fish



Kangaroo



Chimpanzee