

## DIY SECCHI DISK INSTRUCTIONS

### Materials

- Water-resistant paint (white and black)
- Hot glue gun

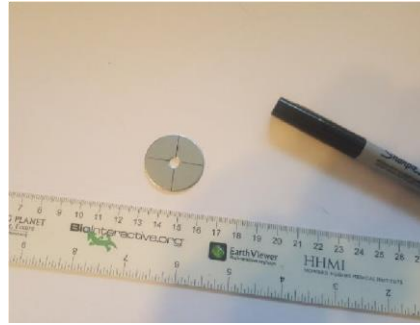
- Metric ruler

### Steps

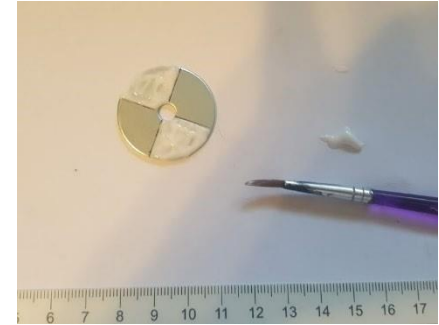
- Permanent marker
- For each disk:
  - Metal washer (must fit inside the experimental bottle)
  - Plastic straw



1. Gather a washer, a plastic straw, black and white paint, a permanent marker, a hot glue gun, and a metric ruler.



2. Draw lines on one side of the washer to divide the circle into quarters.



3. Paint two of the opposite quarters white.



4. Paint the other two opposite quarters black so there is a black-white-black-white pattern on the washer.

5. Line up the bottom of the straw with the 0 cm mark and use a marker to make a mark every 0.5 cm along the straw.

6. Use hot glue to attach the bottom of the straw to the center of the painted side of the washer.