

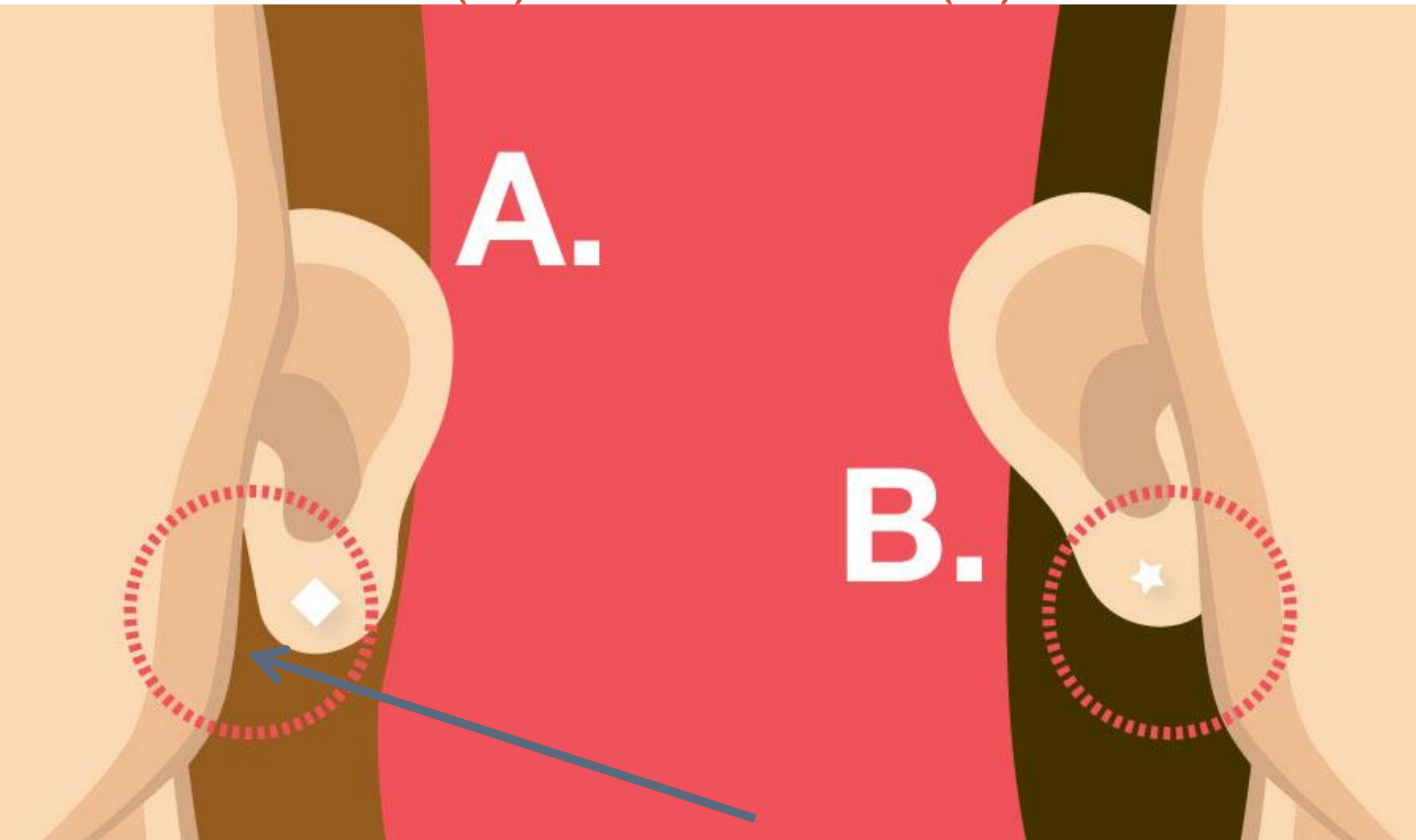
A TRAIT ACCOMPLI --- LAB



ESSENTIAL QUESTION:

Why do organisms look the way they do?

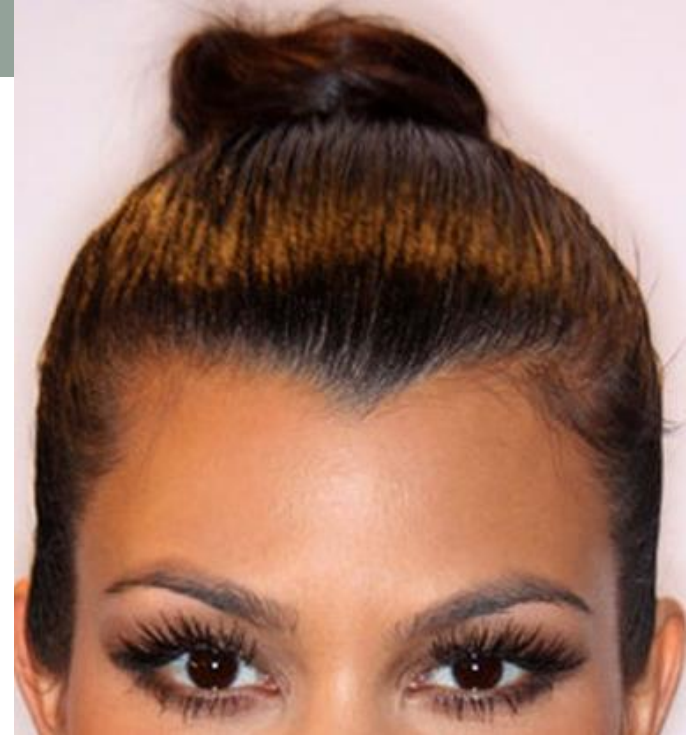
Unattached (A) vs Attached (B) Earlobes



Tongue Rolling



Widow's Peak



LEFT or RIGHT Thumb on Top



Mid-Digital Hair (finger 3-5)

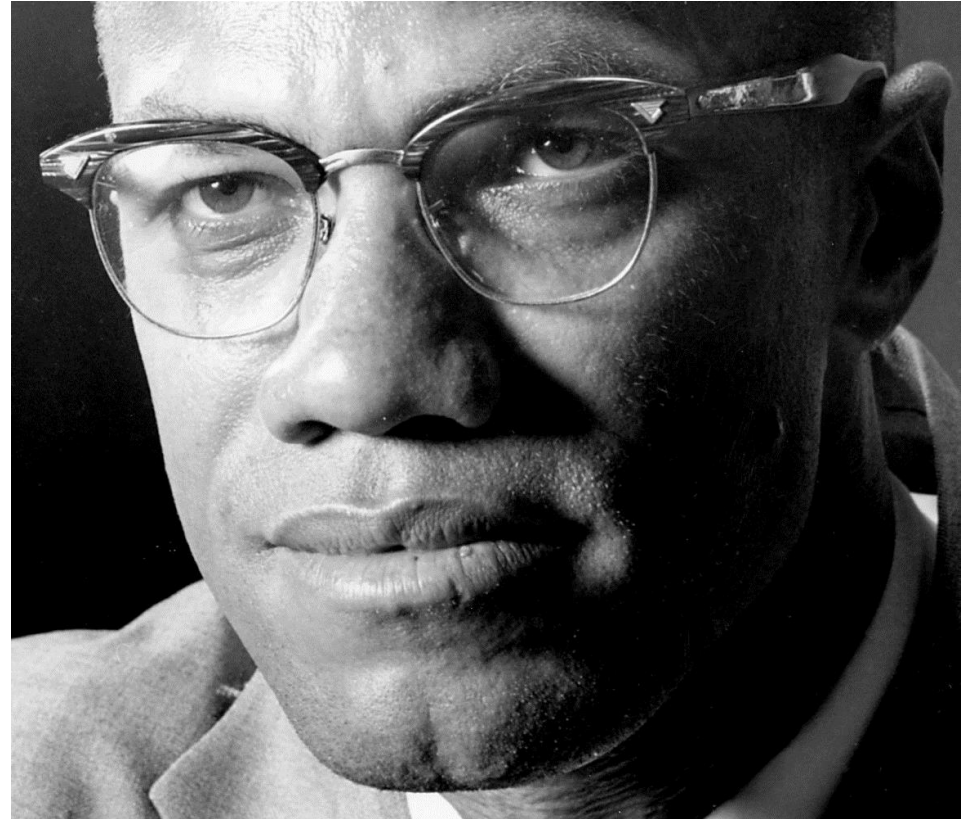
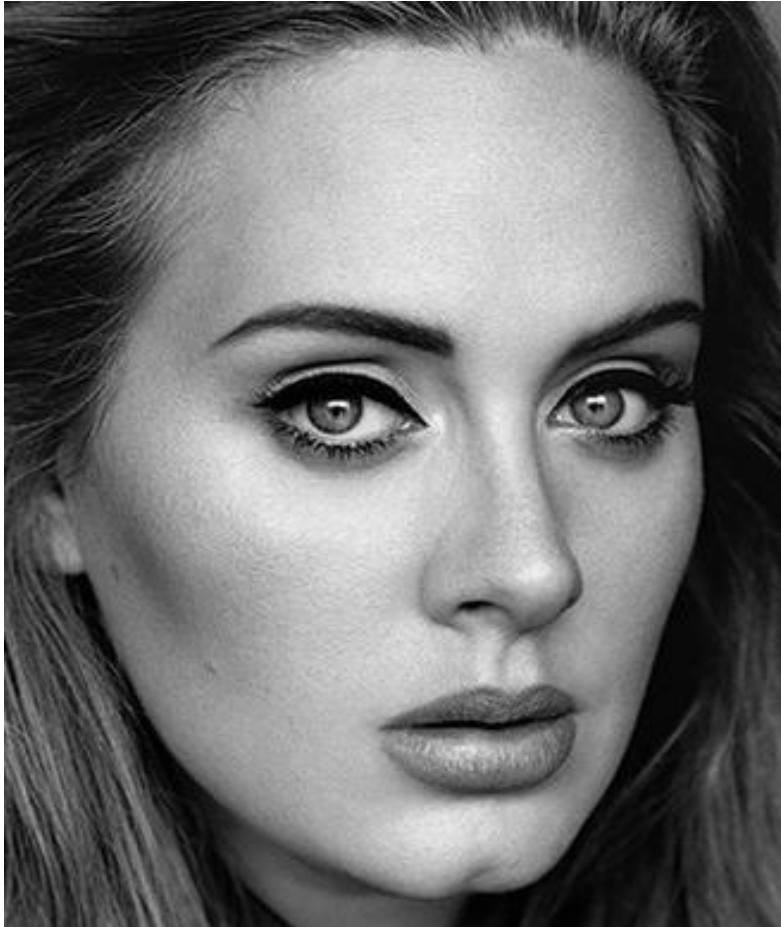


FRECKLES or NO FRECKLES

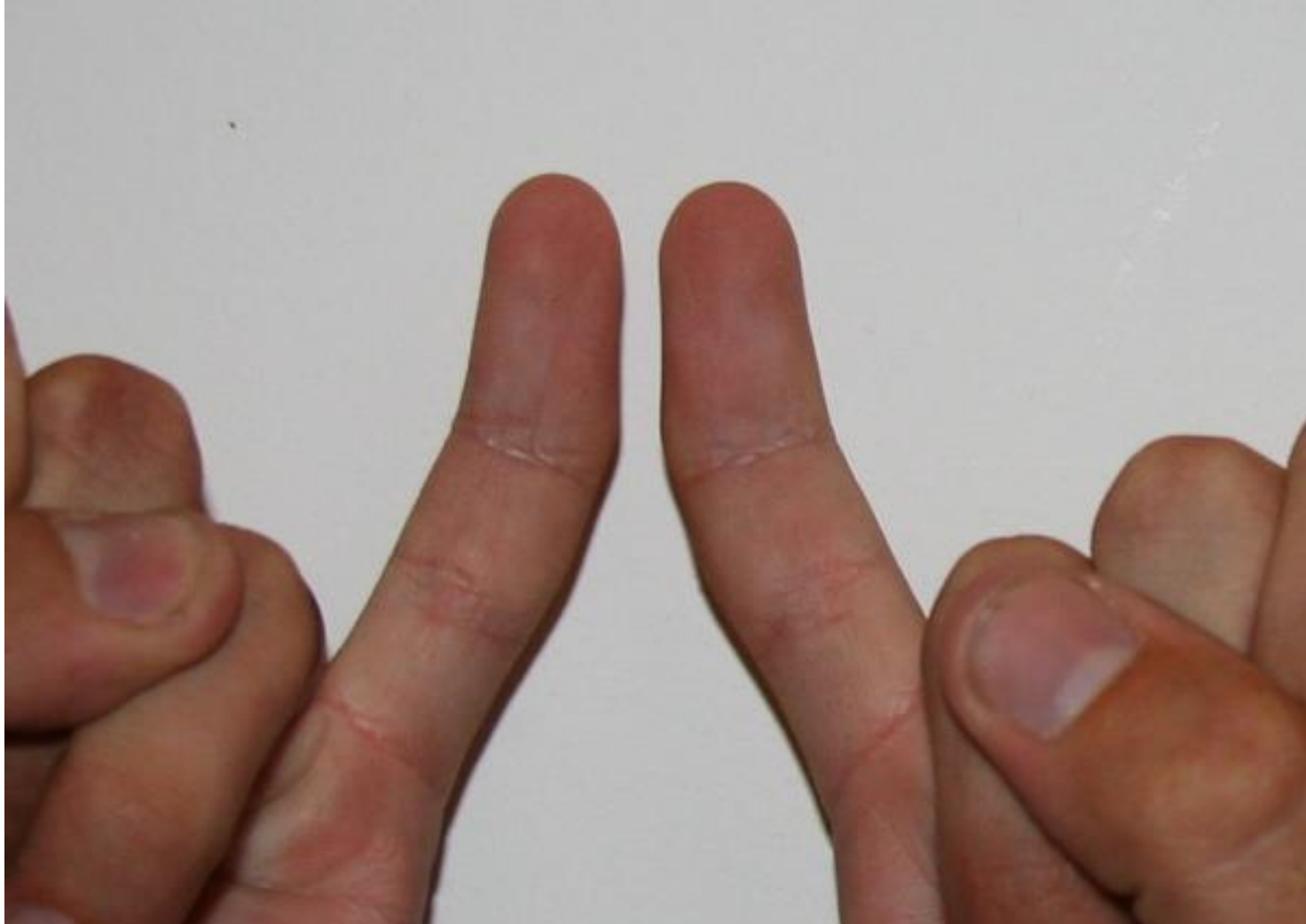


A TRAIT ACCOMPLI: A Trait Accompli Lab

Dimpled Chin or No Dimpled Chin



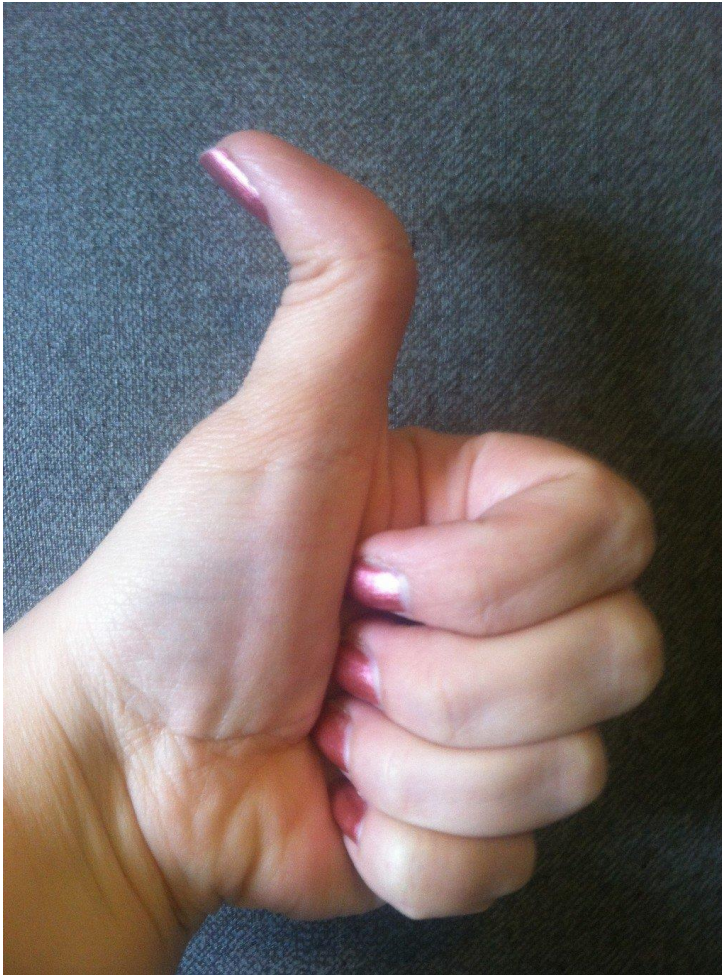
Bent Little Finger or Not



Big Toe Longer vs Second Toe Longer



Hitchhiker Thumb or NOT?



1. Make a fist.
2. Stick up your thumb.
3. Does it bend or is it straight?

Taster or Not Taster

- PTC
- THIOUREA
- SODIUM BENZOATE