

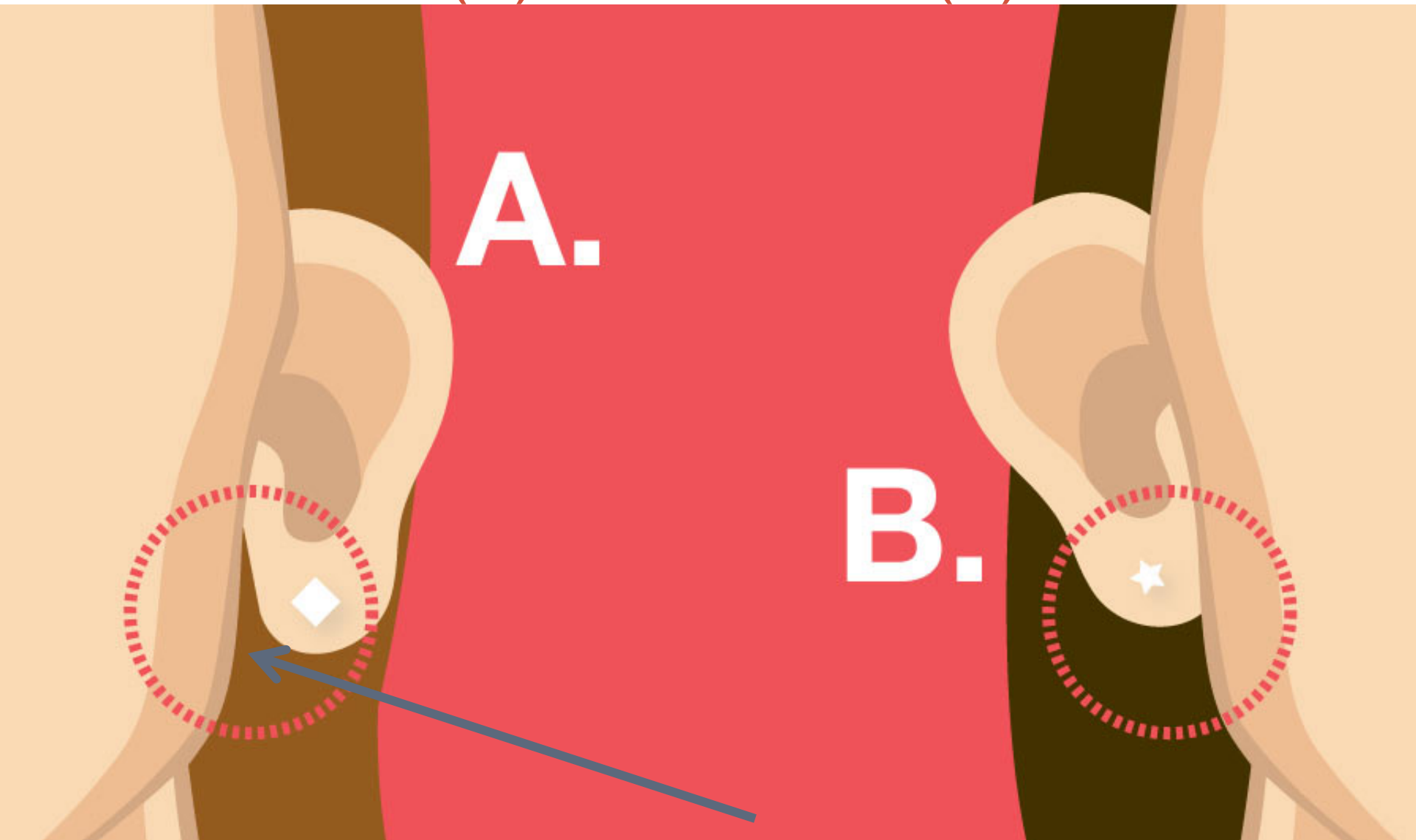
# A TRAIT ACCOMPLI --- LAB



# ESSENTIAL QUESTION:

**Why do organisms look the way they do?**

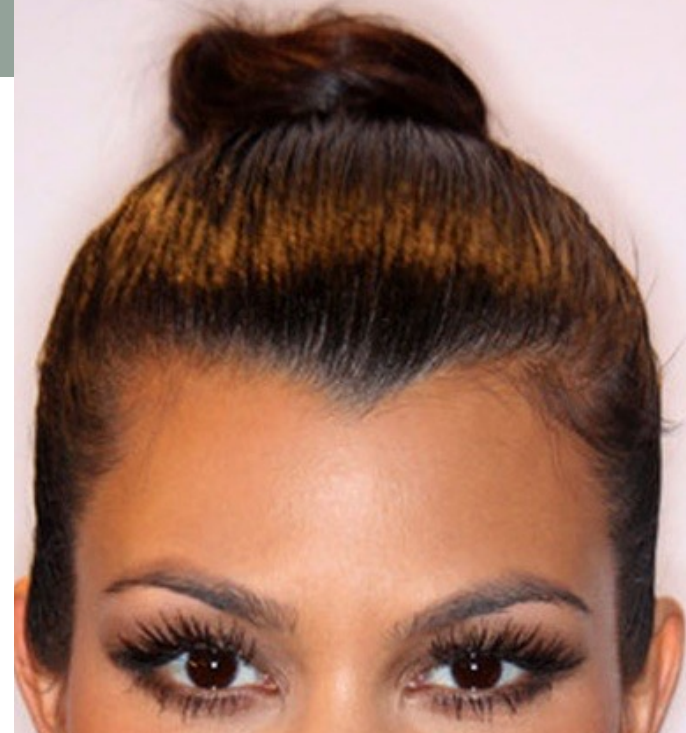
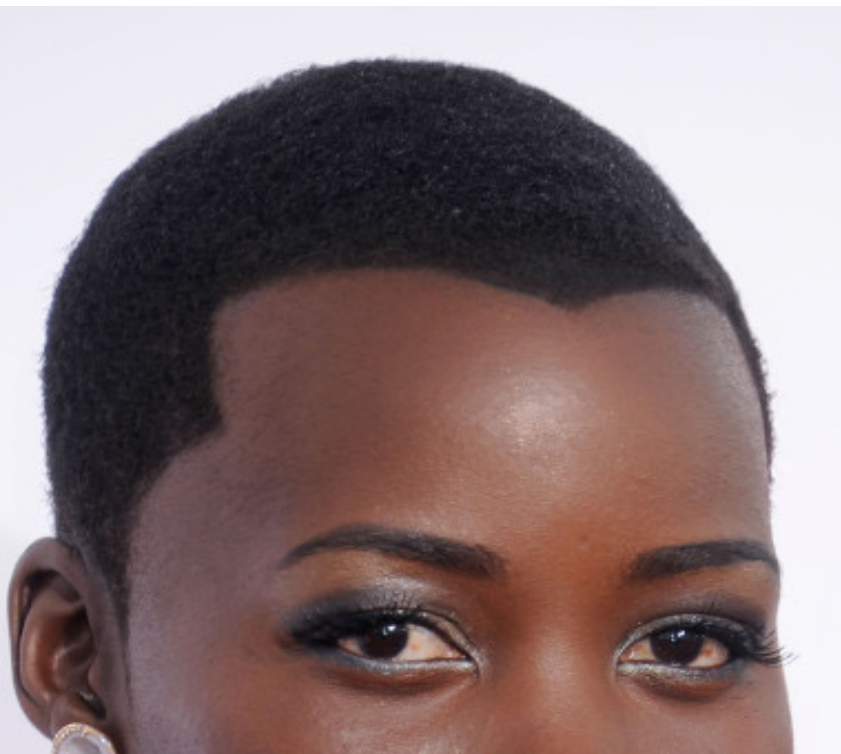
# Unattached (A) vs Attached (B) Earlobes



# Tongue Rolling



# Widow's Peak



# LEFT or RIGHT Thumb on Top



# Mid-Digital Hair (finger 3-5)



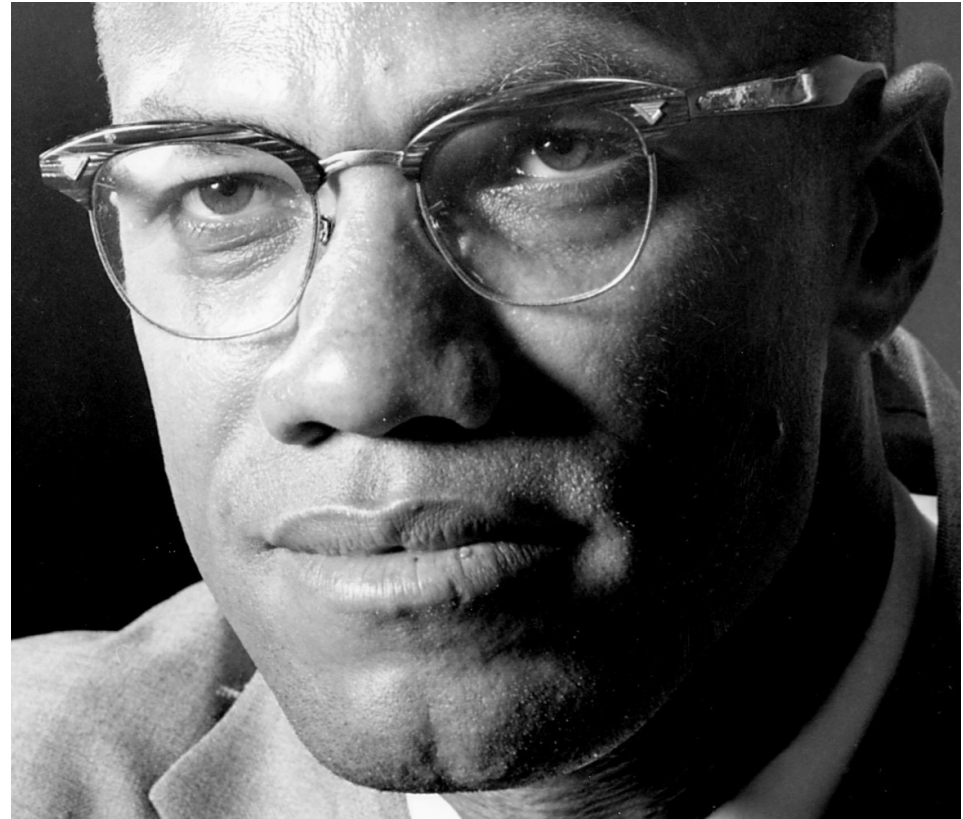
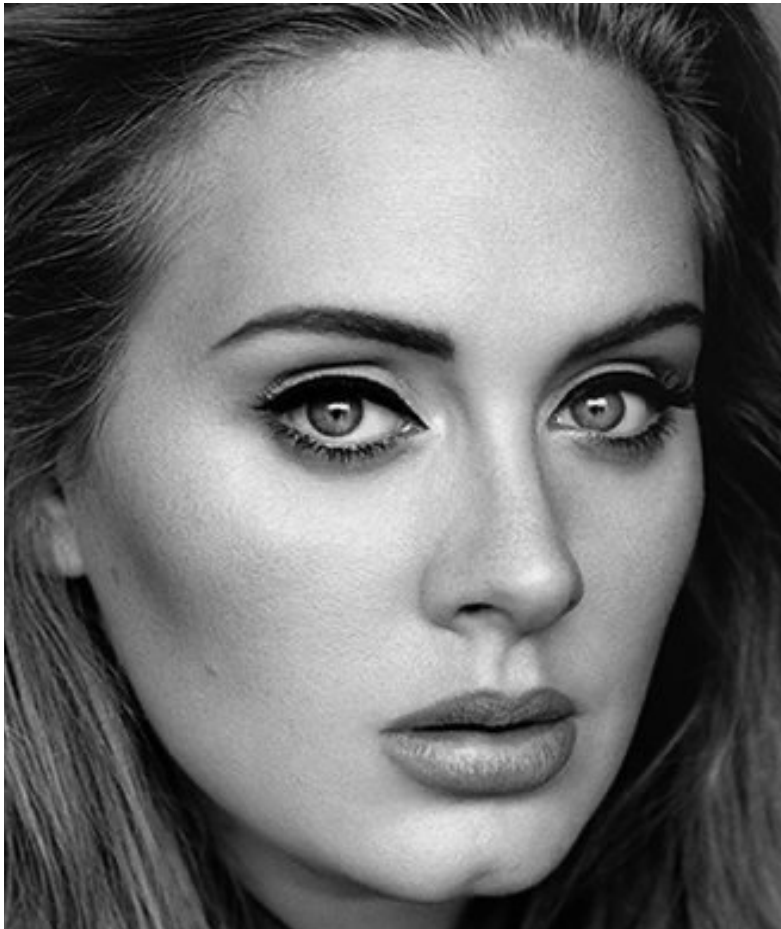
# FRECKLES or NO FRECKLES



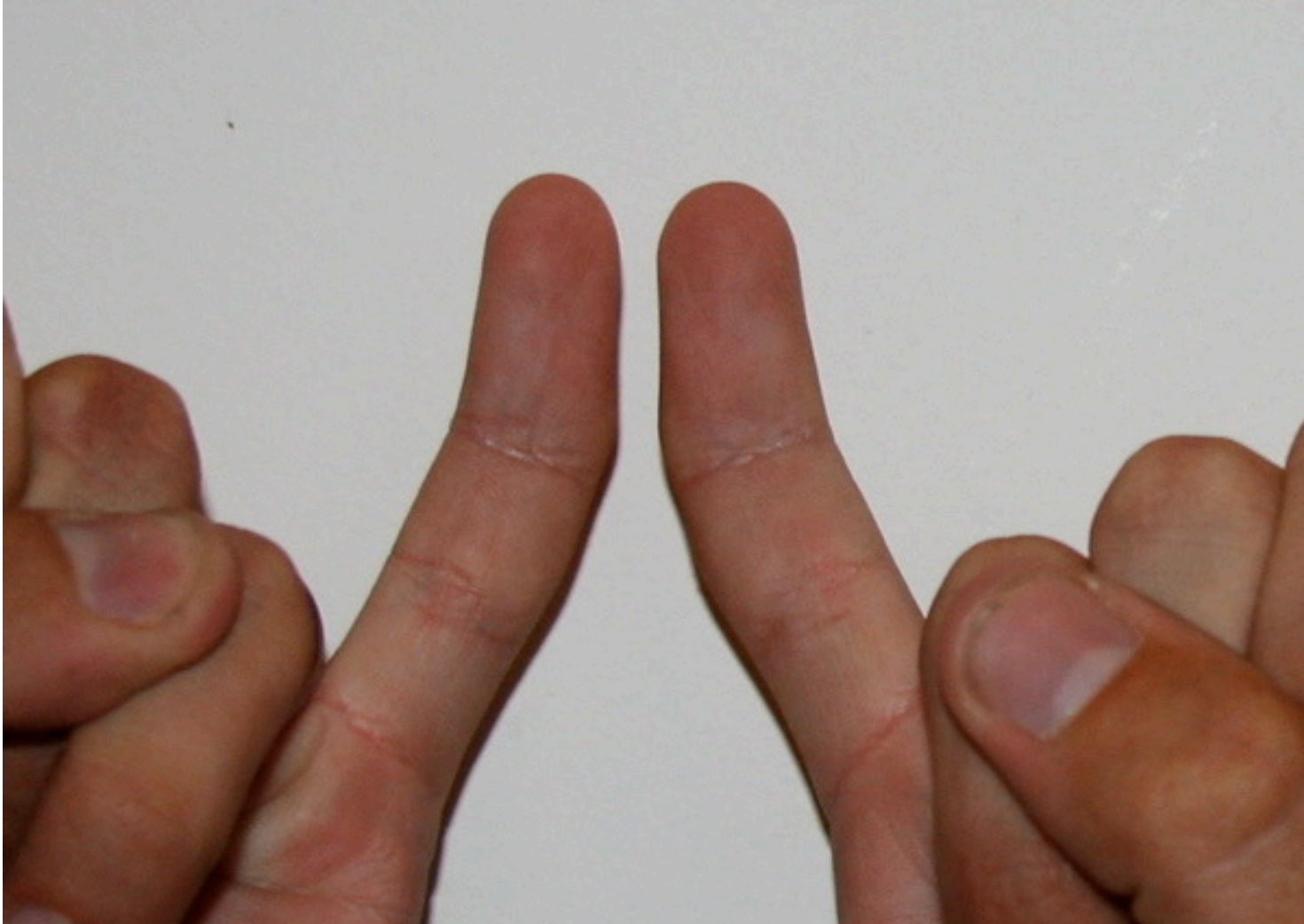
A TRAIT ACCOMPLI: A Trait Accompli Lab



# Dimpled Chin or No Dimpled Chin



# Bent Little Finger or Not



# Big Toe Longer vs Second Toe Longer



# Hitchhiker Thumb or NOT?



1. Make a fist.
2. Stick up your thumb.
3. Does it bend or is it straight?

# Taster or Not Taster

- PTC
- THIOUREA
- SODIUM BENZOATE