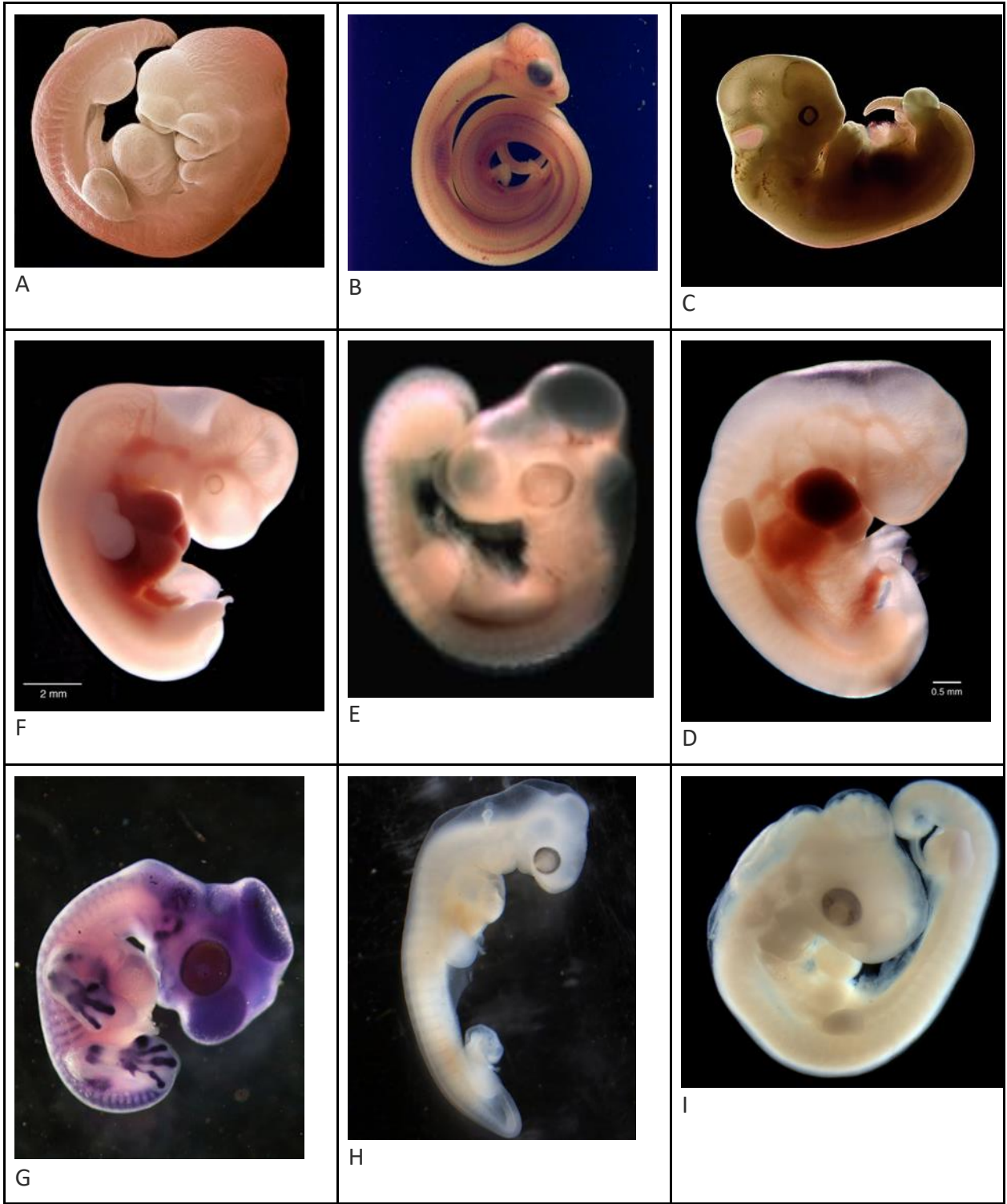


EMBRYO CARD SORTS

Set A, Embryos:





J



K



L



M



N



O



R



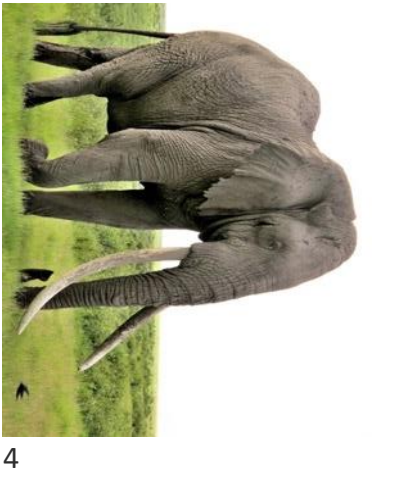



Q



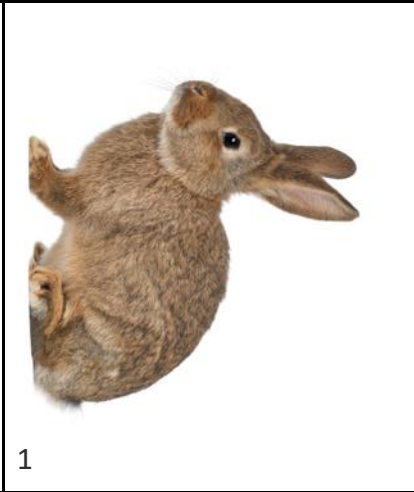
P

Set B, Fully Developed Animals:

 <p>6</p>	 <p>10</p>	 <p>3</p>
 <p>9</p>	 <p>17</p>	 <p>4</p>
 <p>14</p>	 <p>7</p>	 <p>16</p>



12



1



13



18



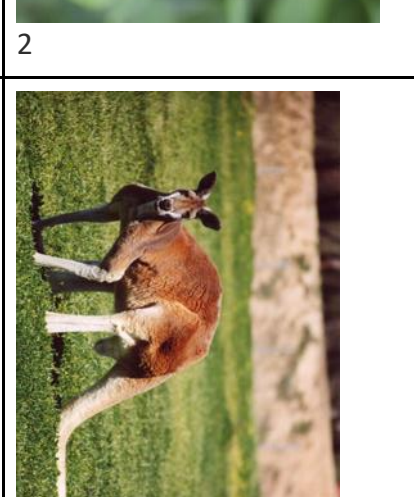
2



8



5



15



11