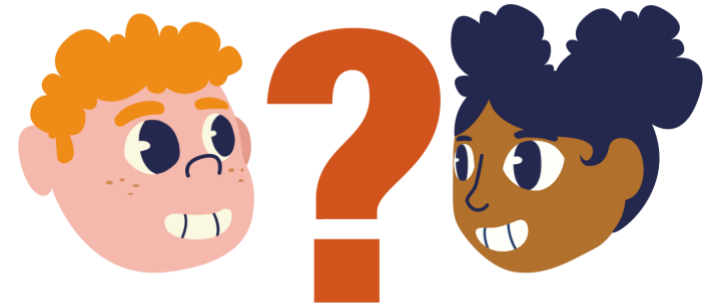


## TRUE FOR WHO?

1. Discuss the claim.
  - a. What were the circumstances that shaped the claim?
  - b. Who made it or would make it?
  - c. What were people's intentions and goals?
  - d. What was at stake?
2. View the claim from each perspective:
  - a. Would this perspective think this statement is true?
  - b. False?
  - c. Uncertain?
  - d. Why?
3. Reach a consensus about where each perspective would fall for the statement.
  - a. Circle the perspective for whom the statement would be true.
  - b. Cross out the perspective for whom the statement would be false.
  - c. Underline the perspective for whom the statement would maybe be true or false.
4. Write down any notes from the discussion that you feel are important and would want to remember.



CLAIM	PERSPECTIVE: TRUE FOR WHO?	NOTES FROM DISCUSSION
<p><b>The benefits of Native American relocation outweigh the cost.</b></p>	Osage	
	Non-native Oklahomans	
	U.S. Government	
<p><b>The Osage Nation, and other Native peoples, need the government's protection (guardianship, competency, FBI, etc.).</b></p>	Osage	
	Non-native Oklahomans	
	U.S. Government	

<b>The Osage Nation, and other Native peoples, are better off with government intervention.</b>	Osage	
	Non-native Oklahomans	
	U.S. Government	