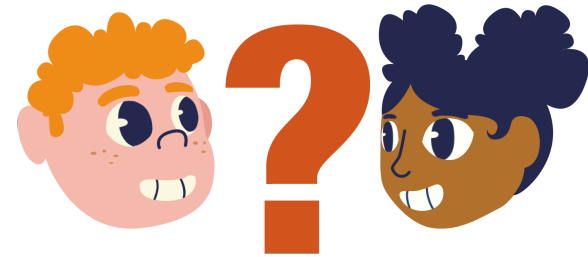


## TRUE FOR WHO?

### Instructions

Use the table on page 2 to complete this activity. For each claim listed in the left column:

1. Discuss the claim.
  - a. What kind of situation was it made in?
  - b. Who made it or would make it?
  - c. What were people's intentions and goals?
  - d. What was at stake?
2. View the claim from each perspective:
  - a. Would the people who hold this perspective think this statement is true?
  - b. False?
  - c. Uncertain?
  - d. Why?
3. Reach a consensus about where each perspective would fall for the statement.
  - a. Circle the perspective for which the statement would be true.
  - b. Cross out the perspective for which the statement would be false.
  - c. Underline the perspective for which the statement would maybe be true or false.
4. Write down any notes from the discussion that you feel are important and would want to remember.



Claim	Perspective: True for Who?	Notes From Discussion
<p><b>The benefits of Native American relocation outweighed the cost.</b></p>	Osage	
	Non-native Oklahomans	
	U.S. Government	
<p><b>The Osage Nation, and other native peoples, need the government's protection (guardianship, competency, FBI, etc.).</b></p>	Osage	
	Non-native Oklahomans	
	U.S. Government	

<b>The discovery of natural resources should be a benefit for all but is often detrimental to locals.</b>	Osage	
	Non-native Oklahomans	
	U.S. Government	