

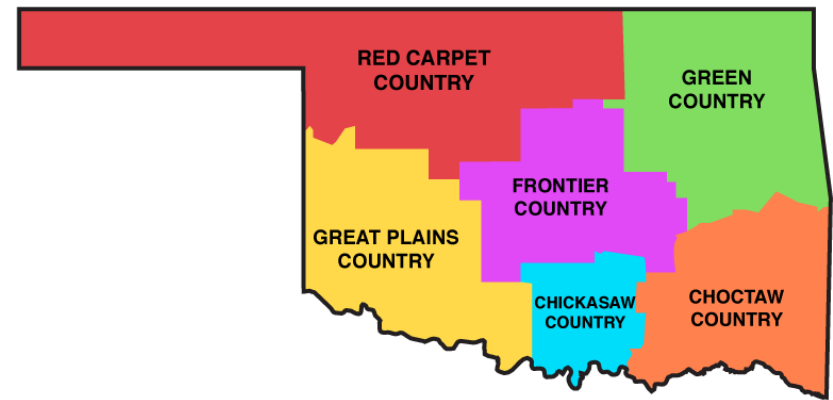


K20
L•E•A•R•N

My Oklahoma Map Book



The “Sooner” State



Oklahoma has one of the most diverse landscapes of any state in the United States. That's because it has 11 regions! This region map shows you the type of land that you are most likely to find around the state.

Which region appears to be the largest? _____

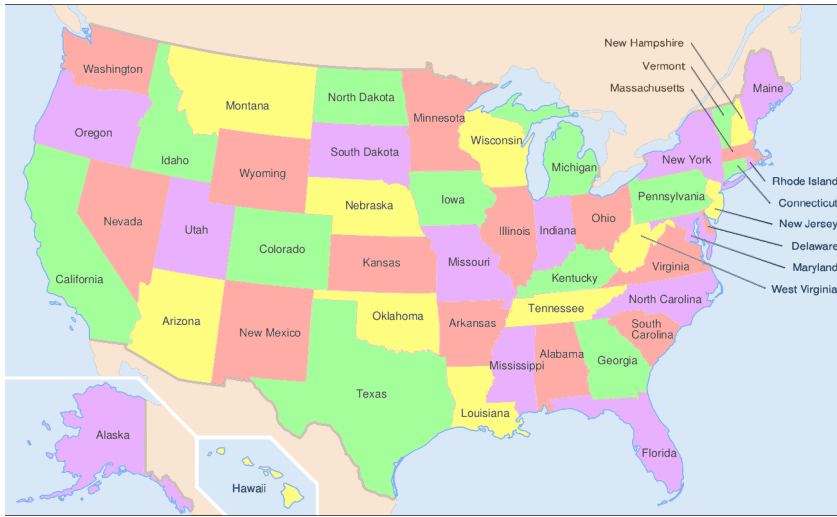
Which region appears to be the smallest? _____

Using a **BLACK** marker, place a star where you live.
Which region do you live in? _____

Circle Oklahoma City with a **RED** marker.
Which region is it in? _____

Circle Tulsa with an **ORANGE** marker.
Which region is it in? _____

Unique to Oklahoma



In this map of the United States, each state has been labeled.

What type of map do you think this is? _____

Oklahoma is bordered by six states. With a **BLACK** marker, place an X over Oklahoma.

Which state borders Oklahoma on the North? Label it with a **RED** heart. _____

Which state borders Oklahoma on the East? Label it with an **ORANGE** sun. _____

Which state borders Oklahoma on the South? Label it with a **BLUE** star. _____

Which state borders Oklahoma on the West? Label it with a **PURPLE** smiley face. _____

Table of Contents

1. The Purposes and Types of Maps

2. Map Symbols

3. Landform Symbols

4. Describing Your Location Using a Map

5. Unique to Oklahoma

The Purposes and Types of Maps

There are many different types of maps. People all around the world use them. These maps tell us important information. Some things they tell us are:

- Where we are
- How to get where we are going
- Where to find famous man-made landmarks
- Where natural resources can be found

The three types of maps that people use are called political, topographical, and physical maps.



Political maps are used most often. They show you where major roads, cities, and borders are located.

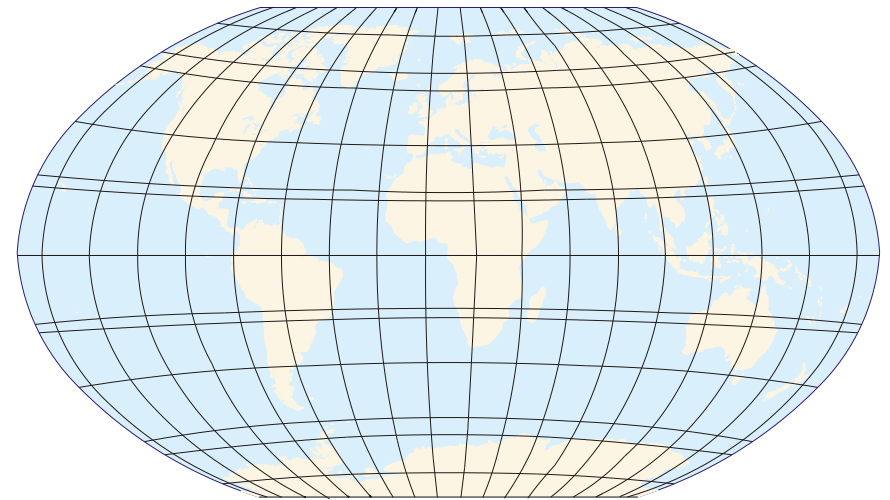
- Circle your city on the map with a **GREEN** marker.
- Highlight the capital city with a **BLUE** highlighter.
- Highlight the major roadways you might take to get from your city to the capital city with a **PINK** highlighter.
- Outline the state border with an **ORANGE** marker.

Did you know that there are many ways you can find your location? One way is called relative location. This is when one place is near another. For example, the treasure is past the hills and in the clearing near the river.



Use relative location to tell where you are.

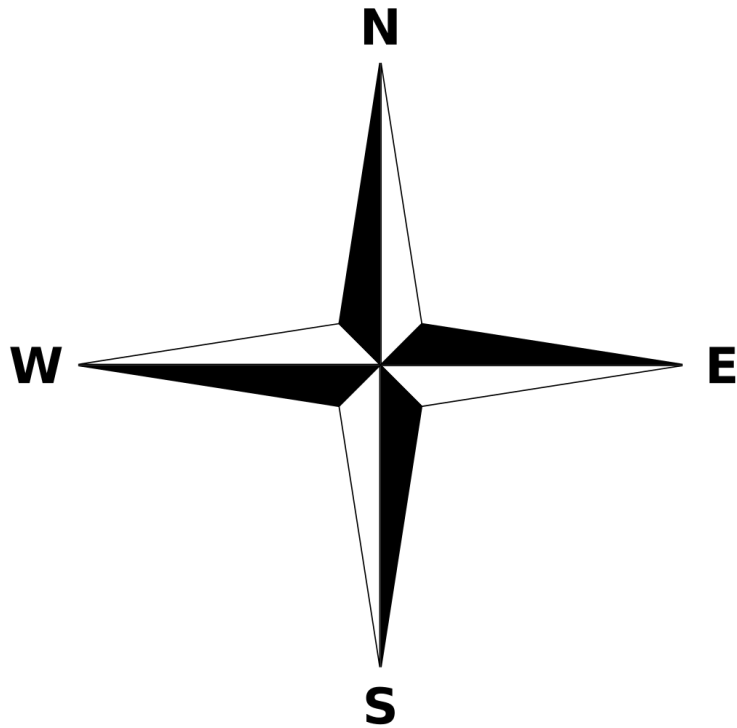
Another way to describe your location is called absolute location. This is the exact point where you are located on Earth. To find this, you use latitude and longitude. These are imaginary lines that go around the Earth. Latitude circles the Earth from East to West. Longitude circles from North to South.



On the map above, trace the latitude lines with a **RED** marker. Trace the longitude lines with a **BLUE** marker.

Describing Your Location Using a Map

Maps help you find your way. People have used maps for a long time. These flat pictures show places around the world. All maps have a compass rose that shows cardinal directions.



The letters on the compass rose stand for North (N), East (E), South (S), and West (W). These directions are called cardinal directions.

The directions on a compass rose point to real places on Earth. North points to the North Pole. South points to the South Pole.

Which part of your classroom faces North? Label this area on the compass rose in a **RED** marker.

Now face South. Label this area of your classroom with a **GREEN** marker.

Repeat this with East and West. Label East with an **ORANGE** marker and West with a **BLUE** marker.

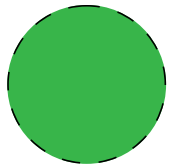


Map Symbols

Maps show us places on Earth in a flat picture. People use symbols, which are small pictures and shapes. These symbols help to make sure all the important information fits.

Each map is unique, so every map has a key. The key tells you what each of the symbols means.

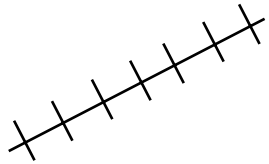
Here are some examples of map symbols



National Preserve or Reservation



Road



Railroad Tracks



Interstate



Capital City

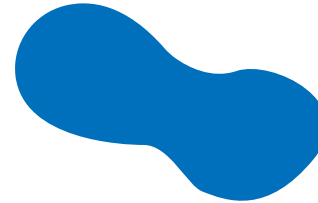


Major City

Landform Symbols



Mountains



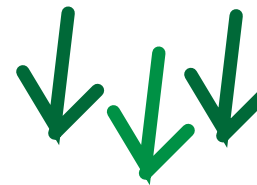
Lake



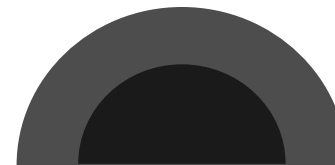
River



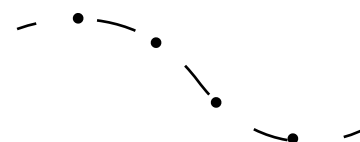
Hills



Grasslands



Caves



Border