

## RECURSOS PARA LOS CASOS



Ciclo de vida de la mosca doméstica (*Musca domestica*)

# ¿Qué sabemos sobre las moscas?

## GUÍA

<i>Musca domestica</i>	Mosca doméstica	Azul
<i>Calliphora vomitoria</i>	Mosca azul	Amarillo
<i>Sarcophaga carnaria</i>	Mosca de la carne	Blanco
<i>Piophiligriceps</i>	Mosca del queso	Rosa
Pupas	la especie de las pupas no puede determinarse, aunque sí su tamaño	Marrón

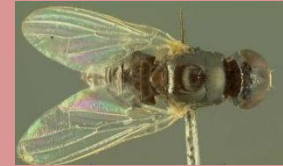
**Table 1:** Life History of Flies. The development of body length (in millimeters) of some fly species during their metamorphosis at 72° F (L = Larvae, P = Pupae, A = Adult Fly).

Days after Death	Species			
	<i>Musca domestica</i> House fly	<i>Calliphora vomitoria</i> Blow fly	<i>Sarcophaga carnaria</i> Flesh fly	<i>Piophiligriceps</i> Skipper fly
1		Egg	L 9-11	
2	Egg	L 9-11	L 12-16	
3	Egg	L 9-11	L 17-20	
4	L 6	L 12-16	L 21-25	
5	L 6	L 12-16	L 26-30	Egg
6	L 7-11	L 17-20	L 31-35	Egg
7	L 12-16	L 17-20	L 36-40	L 3
8	L 17-20	L 21-25	L 41-44	L 3
9	L 21-25	L 21-25	L 44-46	L 4-6
10	L 26-30	L 26-30	L 44-46	L 7-9
11	L 31-35	L 26-30	P 38-40	L 10-13
12	P 26-29	L 31-35	P 38-40	L 14-16
13	P 26-29	L 31-35	P 38-40	P 13-15
14	P 26-29	P 31-34	P 38-40	P 13-15
15	P 26-29	P 31-34	P 38-40	P 13-15
16	P 26-29	P 31-34	P 38-40	P 13-15
17	P 26-29	P 31-34	P 38-40	P 13-15
18	A 30-32	P 31-34	P 38-40	P 13-15
19		P 31-34	A 42-45	A 16-18
20		P 31-34		
21		A 36-38		

# ¿Qué más sabemos sobre las moscas?



## ESPECIE



**Tabla 2:** Información ecológica de algunas especies de moscas. Los retrasos y las aceleraciones en el desarrollo se indican en número de días según el calendario de desarrollo de la Tabla 1 que aparece más arriba.

		<i>Musca domestica</i> House fly	<i>Calliphora vomitoria</i> Blow fly	<i>Sarcophaga carnaria</i> Flesh fly	<i>Piophilina nigriceps</i> Skipper fly
Temperature (°F)	55°	delayed 4	delayed 4.5	delayed 4	delayed 3
	65°	delayed 4	delayed 3	delayed 2	delayed 1
	80°	accelerated 1	accelerated 2	accelerated 1.5	accelerated 1
	85°	accelerated 3	accelerated 4	accelerated 3	accelerated 2
Ecological Traits	Habitat	urban and rural	urban and rural	urban and rural	urban
	Lighting	full to partial sun	partial sun to shady	prefers sunny	prefers sunny
	Drugs	no effect	sensitive to effects	no effect	no effect

**Fuentes:**

Materiales adaptados de: Bambara, S. y Carloye, L. (2006). *Crime Solving Insects*. North Carolina Cooperative Extension Service. <https://fyi.extension.wisc.edu/wi4hstem/files/2015/02/CSIfinal.pdf>

Anderson, M. y Kaufman, P. (Sin fecha). *Common green bottle fly - lucilia sericata (meigen)*. Featured Creatures. [https://entnemdept.ufl.edu/creatures/livestock/flies/lucilia\\_sericata.htm](https://entnemdept.ufl.edu/creatures/livestock/flies/lucilia_sericata.htm)

Diaz, L. y Kaufman, P. (Enero de 2013). *Sarcophaga crassipalpis Macquart - a flesh fly*. Featured Creatures. [https://entnemdept.ufl.edu/creatures/misc/flies/sarcophaga\\_crassipalpis.htm](https://entnemdept.ufl.edu/creatures/misc/flies/sarcophaga_crassipalpis.htm)

Lewis, C., Kaufman, P. E. y Entomology and Nematology Department. (Enero de 2010). *Cheese skipper - piophilina casei (linnaeus)*. Featured Creatures. [https://entnemdept.ufl.edu/creatures/urban/flies/cheese\\_skipper.htm](https://entnemdept.ufl.edu/creatures/urban/flies/cheese_skipper.htm)