

# VOICES FROM THE PAST

HISTORY AND LITERATURE

# KWL CHART

<u>K</u> What I KNOW	<u>W</u> I WANT to know	<u>L</u> I LEARNED



- Photo by U.S. Army
- The huge atomic cloud August 6, 1945, after an Uranium bomb, the first nuclear weapon in the world, was dropped in Hiroshima City. It was estimated that its energy was equivalent to 15 kilotons of TNT. This is an aerial photograph from 80 kilometers away from the Inland Sea, taken about one hour after the dropping.



Witness to Destruction [photograph]. (1945). Retrieved from <http://newsclick.in/content/rememering-hiroshima-nagasaki>



Hiroshima Church. (1945). [photograph]. Retrieved from <http://www.neatorama.com/2012/02/27/the-unluckiest-train-ride/>



Tibbets, P. W. (1945). Hiroshima [photograph].



Tsuchiya, H. (n.d.) *Melted Sake Bottles* [photograph]. Retrieved from [http://www.english.illinois.edu/maps/poets/g\\_l/levine/bombing.htm](http://www.english.illinois.edu/maps/poets/g_l/levine/bombing.htm)

The shadows of the parapets were imprinted on the road surface of the *Yorozuyo* Bridge, 1/2 of a mile south-southwest of the hypocenter. It is one of the important clues for establishing the location of the epicenter.

From *Modern American Poetry*. ( ). *A Photo-Essay on the Bombing on Hiroshima and Nagasaki*. Retrieved from [http://www.english.illinois.edu/maps/poets/g\\_l/levine/bombing.htm](http://www.english.illinois.edu/maps/poets/g_l/levine/bombing.htm)

Photo by U.S. Army. (1945).





The burns on this victim look like *kimono* patterns; the lighter areas of the cloth reflected the intense light from the bomb, causing less damage.

From New World Encyclopedia. (2015). *Bombing of Hiroshima and Nagasaki*. Retrieved from [http://www.newworldencyclopedia.org/entry/Bombing\\_of\\_Hiroshima\\_and\\_Nagasaki](http://www.newworldencyclopedia.org/entry/Bombing_of_Hiroshima_and_Nagasaki)

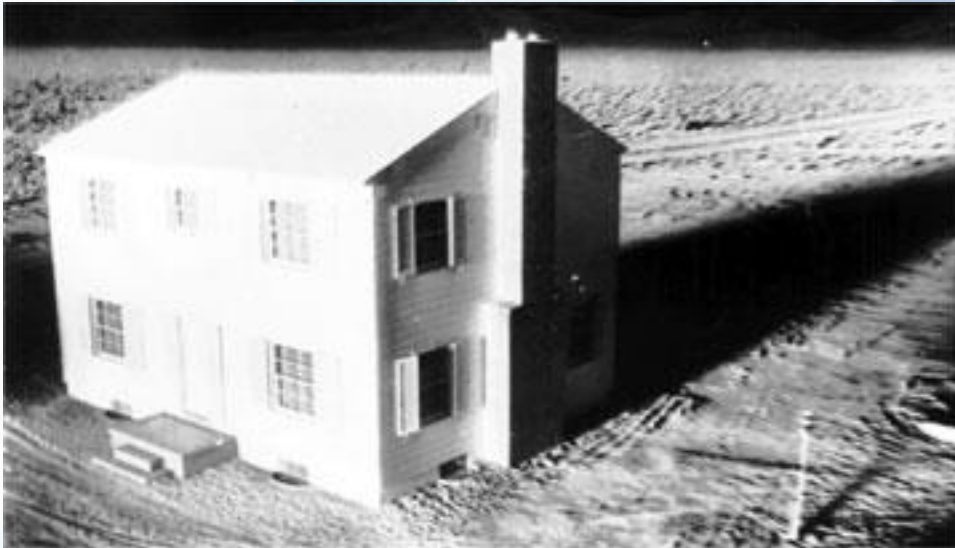


**Right:** Yamahata, Y. (1945). From *Nagasaki Journey: The Photographs of Yosuke Yamahata*. Retrieved from [http://www.english.illinois.edu/maps/poets/g\\_l/levine/bombing.htm](http://www.english.illinois.edu/maps/poets/g_l/levine/bombing.htm)

**Below:** Hiroshima bombing victims. (1945). [photograph]. Retrieved from <http://www.vreme.com/cms/view.php?id=944058>



## Blast Wave Testing



[Link to Blast Wave video:](http://youtu.be/tr76hNngqts)  
<http://youtu.be/tr76hNngqts>



[Link to Thermal Pulse video:](http://www.atomicarchive.com/Effects/thermalpulse.shtml)  
<http://www.atomicarchive.com/Effects/thermalpulse.shtml>