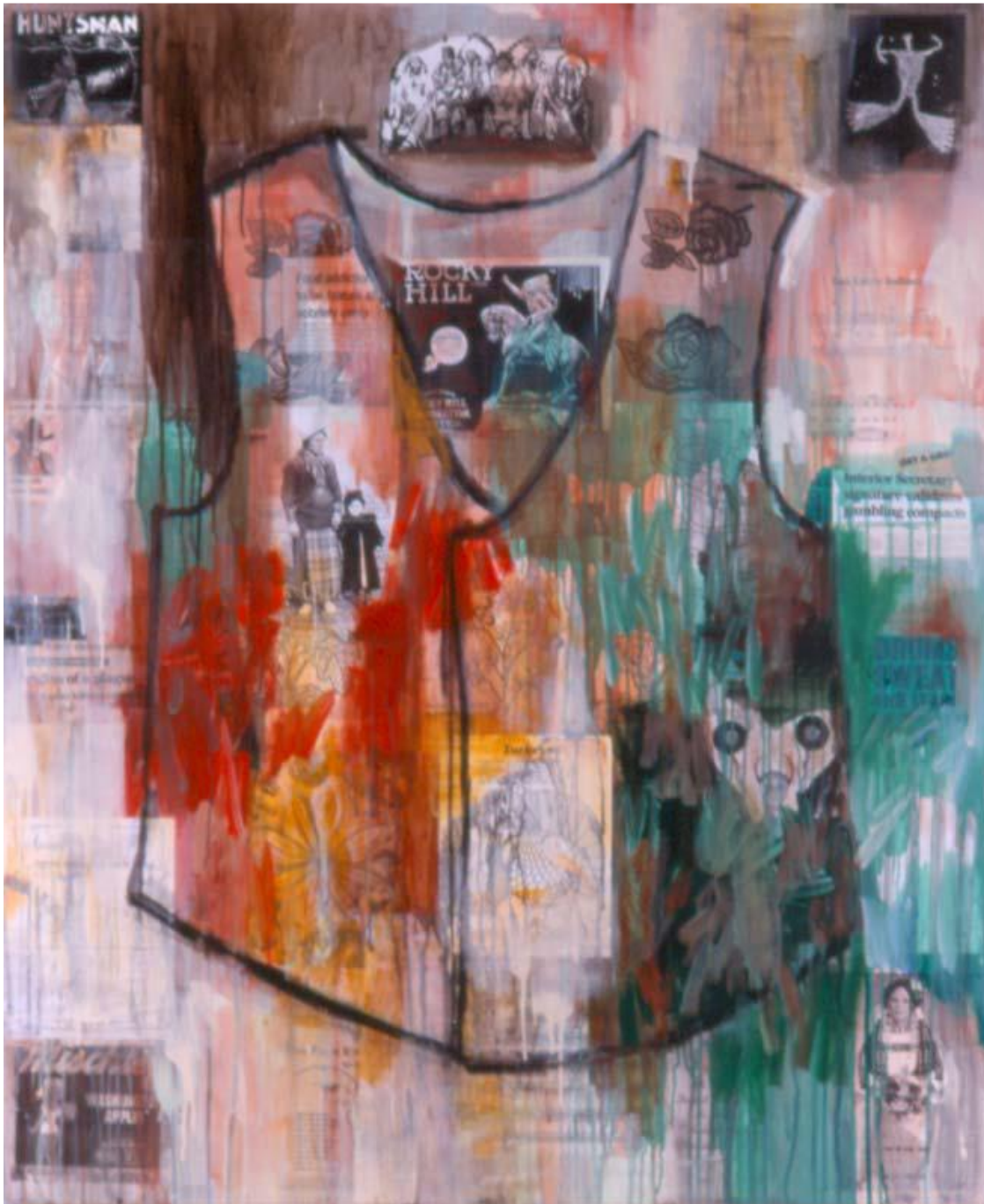


Quick-to-See Smith's Art for Analysis

Artwork 1: Flathead Vest



Flathead Vest: Father and Child, acrylic, paper, canvas, 1996, 60 x 50"

Smith, J. Q.-. t.-. S. (1996). *Flathead vest: Father and child* [Painting]. Missoula, MT: Missoula Art Museum. Retrieved from <http://missoulaart.pastperfect-online.com/36919cgi/mweb.exe?request=record;id=10B95593-45D8-414E-9E6A-645039211641;type=101>

Artwork 2: Ode to the Chief Seattle



Ode to Chief Seattle, lithograph, ca. 1991, 30 x 22.25"

Smith, J. Q- t. S. (1991). *Ode to Chief Seattle* [Lithograph]. Missoula, MT: Missoula Art Museum. Retrieved from <http://missoulaart.pastperfect-online.com/36919cgi/mweb.exe?request=record;id=FA68A456-6B46-4BEA-B1E7-164757597140;type=101>

Artwork 3: Indian Men Wear Shirts and Ties



Indian Men Wear Shirts and Ties, lithograph, ca. 1997, "41.75 X 29.25"

Smith, J. Q. t. S. (1997). *Indian men wear shirts and ties* [Lithograph]. Missoula, MT: Missoula Art Museum. Retrieved from <http://missoulaart.pastperfect-online.com/36919cgi/mweb.exe?request=record;id=61D97740-A703-4F36-AE45-971619371694;type=101>

