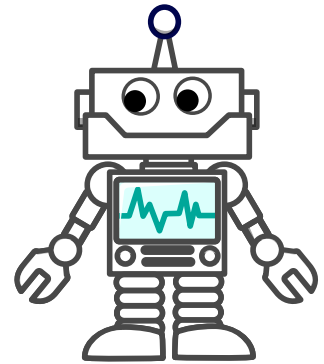


NEW AND IMPROVED

Use what you have learned about analog and digital signals to design a new and improved digital version of the robot. Then create a short presentation about your new robot using the guidelines below.



Presentation Guidelines

Your presentation should include:

- Group members' names
- Title or name of your new robot
- The problem your new robot solves
- How your new robot works
- Include a CER slide at the end (see details below)

CER Slide

Your final slide should include a Claim, Evidence, and Reasoning.

- **Claim:** *My new and improved _____ digital robot is more reliable than the original, analog robot.*
- **Evidence:** State how your new digital robot is more reliable. Include information that supports how you know. Cite any references beyond your notes to support your claim. *An example of greater reliability of [digital robot] is... My new and improved robot demonstrates better reliability by...*
- **Reasoning:** Explain why your evidence supports your claim. How does the evidence support the need for the new robot's digital capabilities instead of the original analog design? *The digital version of this is better than the analog version because... My evidence supports my claim since...*

Consider the following when creating your presentation:

- Size of text (18pt or larger)
- Background (simple is better than busy)
- Sketch or image to represent your new robot