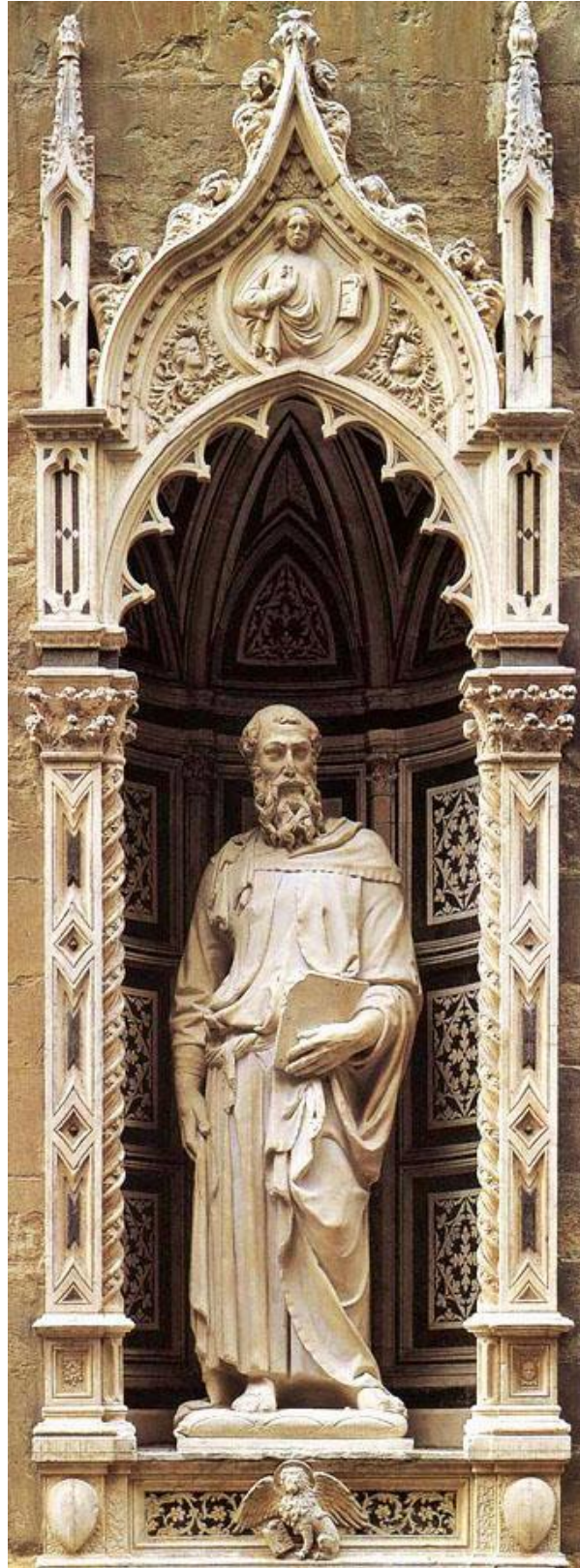


da Vinci, L. (1500 aprox.). *Salvator Mundi* [Pintura: óleo sobre madera de nogal]. Wikimedia Commons.  
[https://commons.wikimedia.org/wiki/File:Leonardo\\_da\\_Vinci,\\_Salvator\\_Mundi,\\_c.1500,\\_oil\\_on\\_walnut,\\_45.4\\_%C3%97\\_65.6\\_cm.jpg](https://commons.wikimedia.org/wiki/File:Leonardo_da_Vinci,_Salvator_Mundi,_c.1500,_oil_on_walnut,_45.4_%C3%97_65.6_cm.jpg)



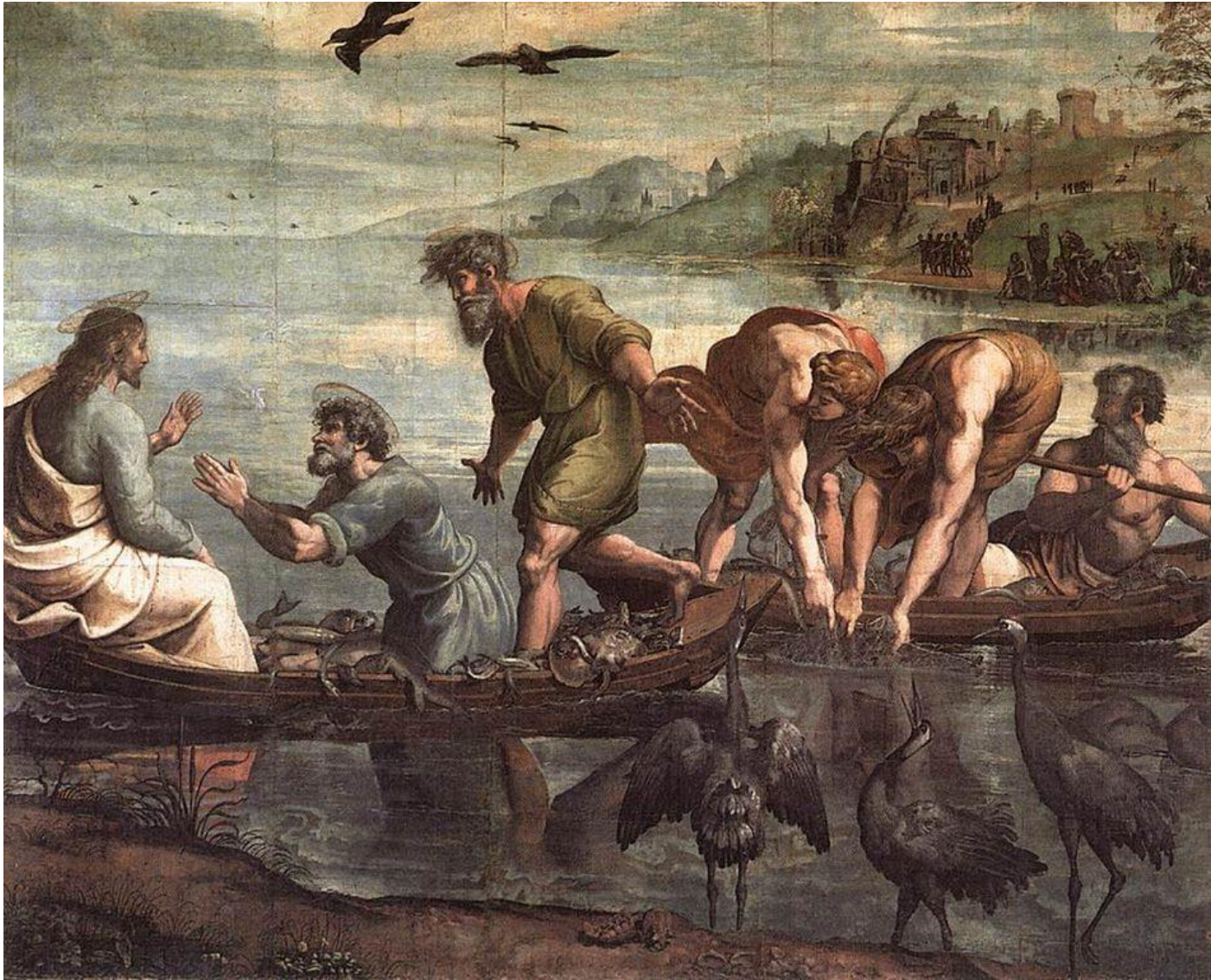
Donatello. (1411-1413). San Marcos [estatua de mármol]. Wikimedia Commons.

<https://commons.wikimedia.org/wiki/File:Stmark.jpg>



Miguel Ángel. (1498-1499). Pietà [estatua]. Wikimedia Commons.

[https://commons.wikimedia.org/wiki/File:Michelangelo%27s\\_Piet%C3%A0,\\_St\\_Peter%27s\\_Basilica\\_\(1498%E2%80%931499\).jpg](https://commons.wikimedia.org/wiki/File:Michelangelo%27s_Piet%C3%A0,_St_Peter%27s_Basilica_(1498%E2%80%931499).jpg)



Rafael. (1515). *La corriente milagrosa de peces* [pintura]. Wikimedia Commons. [https://commons.wikimedia.org/wiki/File:V%26A\\_-\\_Raphael,\\_The\\_Miraculous\\_Draught\\_of\\_Fishes\\_\(1515\).jpg](https://commons.wikimedia.org/wiki/File:V%26A_-_Raphael,_The_Miraculous_Draught_of_Fishes_(1515).jpg)