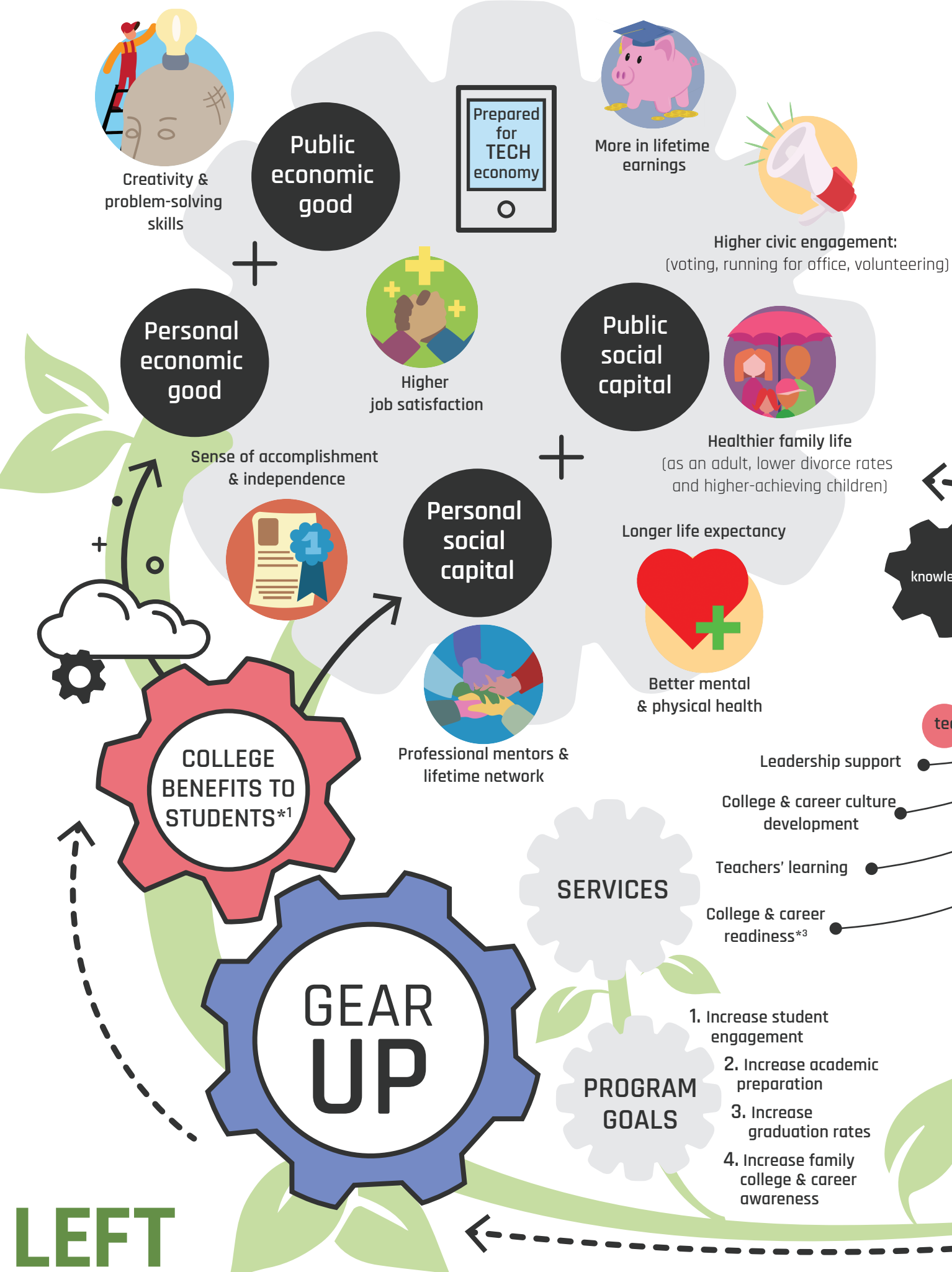
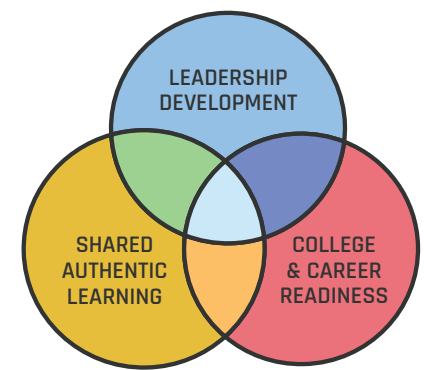


RIGHT

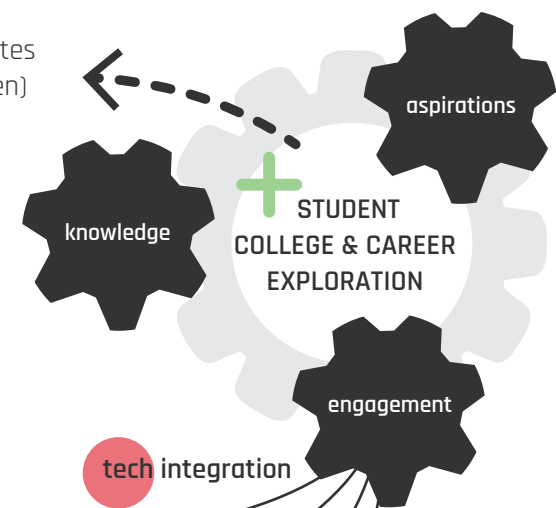
The K20 Center's **mission** is to advance leadership and learning through authentic experiences, educational resources, technology integration, college and career readiness, and community connections that innovate and transform education.



LEFT



INNOVATION & TRANSFORMATION



RESEARCH-BASED & DATA-DRIVEN

Evaluation expectations (surveys, student achievement data, mini-research studies)

model resources
learn.k20center.ou.edu
strategies, lessons, activities

- PROGRAM GOALS**
1. Increase student engagement
 2. Increase academic preparation
 3. Increase graduation rates
 4. Increase family college & career awareness

- AUTHENTIC LESSONS*2**
- INCREASE STUDENT PERCEPTIONS OF enjoyment, interest, critical thinking, future relevance
 - DECREASE STUDENT PERCEPTIONS OF boredom, confusion, frustration, hopelessness

- SERVICES**
- tech integration
 - Leadership support
 - College & career culture development
 - Teachers' learning
 - College & career readiness*3
 - mentoring
 - knowledge
 - engagement

References

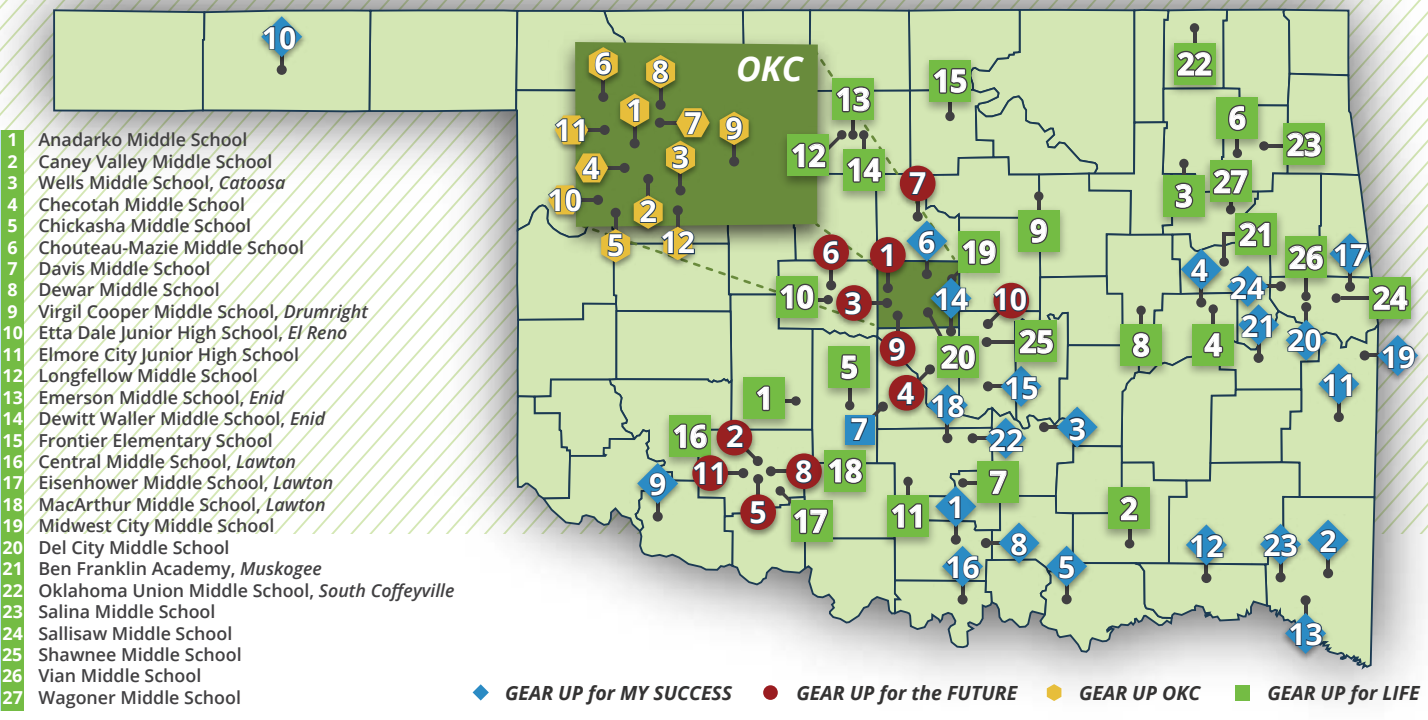
¹Sutton, H. (2017). Learn to articulate the value of college beyond dollar signs. *Recruiting & Retaining Adult Learners*, 19(7), 6-7.

²Parsons, A. E., Heddy, B. C., Wilson, S. N., Williams, L. A., Atkinson, L. K., & Garn, G. A. (2019). Making 'brain food': Converting photosynthesis into a positive learning experience through authentic instruction. *Journal of Biological Education*

³Wilson, S.N., Williams, L., Williams, L.A., Goodin, A., & Wheeler, A. (in press 2023). Reexamining the democratic IDEALS and best practices in education. In P. Woods, H. D. O'Hair, & M. J. O'Hair (Eds.), *Communication and Education: Promoting Peace and Democracy in Times of Crisis and Conflict*. (Vol. 3). Wiley-Blackwell, Inc.

Map of Cohort Schools

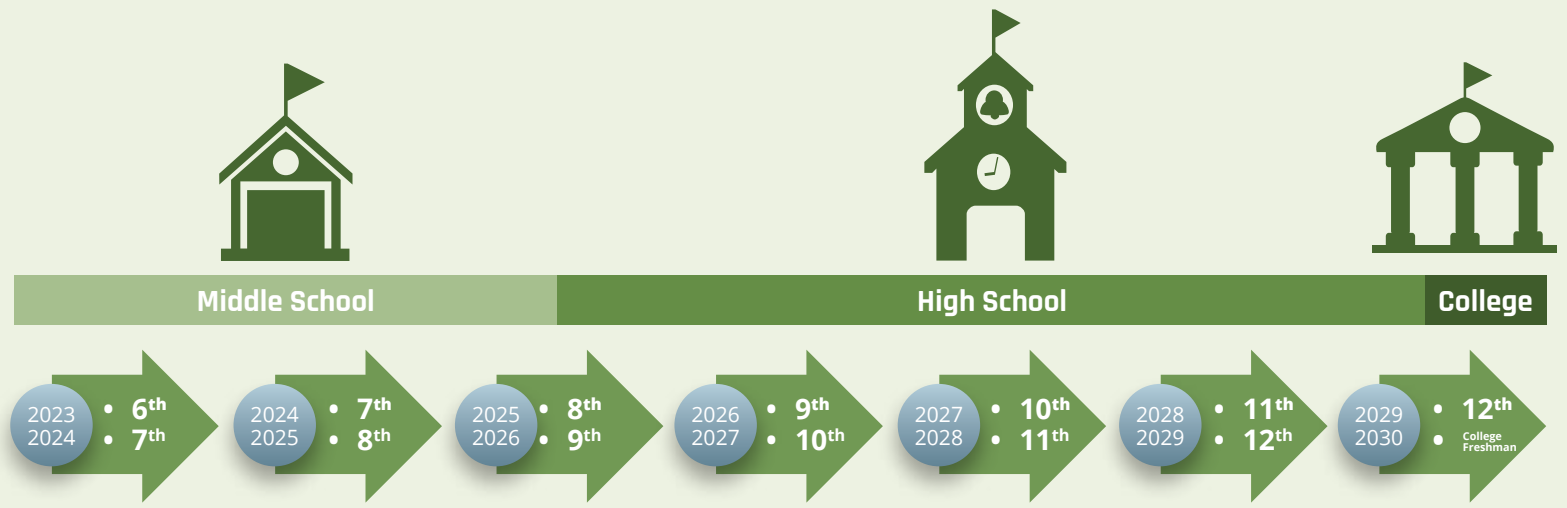
- | | | |
|--|---|---|
| 1 Ardmore Middle School | 15 Macomb Elementary School | 5 Eisenhower Middle School, Lawton |
| 2 Rector Johnson Junior High, Broken Bow | 16 Marietta Middle School | 6 Etta Dale Junior High, El Reno |
| 3 Byng Middle School | 17 Muldrow Middle School | 7 Guthrie Junior High |
| 4 Checotah Middle School | 18 Pauls Valley Junior High | 8 MacArthur Middle School, Lawton |
| 5 Colbert Middle School | 19 Pocola Middle School | 9 Santa Fe South Middle School, Oklahoma City |
| 6 Crooked Oak Middle School, Oklahoma City | 20 Tommie Spear Middle School, Sallisaw | 10 Shawnee Middle School |
| 7 Dibble Middle School | 21 Stigler Middle School | 11 Tomlinson Middle School, Lawton |
| 8 Dickson Middle School | 22 Stratford Middle School | 1 Belle Isle Enterprise Middle School |
| 9 Frederick Middle School | 23 Valliant Middle School | 2 Classen School of Advanced Studies |
| 10 Guymon High School | 24 Vian Middle School | 3 Douglass Mid-High School |
| 11 Heavener Elementary School | 1 Capps Middle School, Putnam City | 4 Emerson Alternative School |
| 12 Hugo Middle School | 2 Central Middle School, Lawton | 5 Jefferson Middle School |
| 13 Ilabel Middle School | 3 Cooper Middle School, Putnam City | 6 John Marshall Mid-High School |
| 14 Little Axe Junior High | 4 Curtis Inge Middle School, Noble | 7 Northeast Academy |
| | | 8 Oklahoma Centennial Mid-High School |
| | | 9 Rogers Middle School |
| | | 10 Roosevelt Middle School |
| | | 11 Taft Middle School |
| | | 12 Webster Middle School |



- 1 Anadarko Middle School
- 2 Caney Valley Middle School
- 3 Wells Middle School, Catoosa
- 4 Checotah Middle School
- 5 Chickasha Middle School
- 6 Chouteau-Mazie Middle School
- 7 Davis Middle School
- 8 Dewar Middle School
- 9 Virgil Cooper Middle School, Drumright
- 10 Etta Dale Junior High School, El Reno
- 11 Elmore City Junior High School
- 12 Longfellow Middle School
- 13 Emerson Middle School, Enid
- 14 Dewitt Waller Middle School, Enid
- 15 Frontier Elementary School
- 16 Central Middle School, Lawton
- 17 Eisenhower Middle School, Lawton
- 18 MacArthur Middle School, Lawton
- 19 Midwest City Middle School
- 20 Del City Middle School
- 21 Ben Franklin Academy, Muskogee
- 22 Oklahoma Union Middle School, South Coffeyville
- 23 Salina Middle School
- 24 Sallisaw Middle School
- 25 Shawnee Middle School
- 26 Vian Middle School
- 27 Wagoner Middle School

The GEAR UP for LIFE Model

- **Goal 1:** Increase cohort students' engagement in learning.
- **Goal 2:** Increase cohort students' academic preparation for PSE at graduation from participating schools.
- **Goal 3:** Increase cohort schools' high school graduation and PSE enrollment rates.
- **Goal 4:** Increase cohort students' and their families' knowledge of PSE options, preparation, and financing.



This document serves as a primer to the K20 Center and its mission, approach, and ideals as well as to the GEAR UP program and its goals. Through exploring this relationship, you'll see how K20 and GEAR UP work together to establish a college-going culture that leads to life-altering benefits for your students.

The K20 GEAR UP for LIFE (Learning and Investigating Future Education) project is a partnership between the K20 Center for Educational and Community Renewal (K20 Center) and 27 high-poverty, mostly rural schools located in 22 Oklahoma school districts. The partnership seeks to directly impact 8,258 students through a 7-year project beginning with 6th and 7th grades in October 2023.

K20 Center for Educational and Community Renewal
 3100 Monitor Avenue, Suite 200
 Norman, Oklahoma 73072-7808
 (405)325-1267 | k20center@ou.edu

