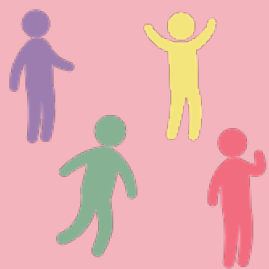


# INSTRUCTIONAL STRATEGIES



## Tableaus

Students work in groups to preform their interpretation of a text by posing as still artwork.

LEARN.**K20**CENTER.OU.EDU/STRATEGIES

## TABLEAUS

### Summary

A tableau is a dramatic form of expression composed of physically performed frozen images. Students working in pairs or small groups are asked to analyze a text or image. The students then plan to create a physical frozen image depicting the text or recreating the image provided. After a brief physical warm up, the groups rehearse and perform their tableau. In addition to performing, group members should also be able to provide the class with their interpretation of the assignment, describe their process, answer any questions. This instructional strategy provides an opportunity for students physically express their understanding of a concept.

### Procedure

1. Divide students into small groups.
2. Assign each small group a text or an image.
3. Lead groups through a brief physical warm up (e.g., breathing exercises, shoulder rolls, mild stretching).
4. Have groups discuss their text or image for a set amount of time, planning their execution of the tableau.
5. When time is up, give groups the opportunity to rehearse "on their feet."
6. Each group presents their tableau to the class and explains their performance based on the text or image.
7. Groups address questions from their classmates (optional).