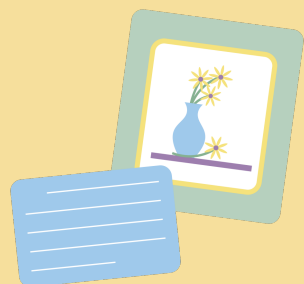


INSTRUCTIONAL STRATEGIES



Masterpiece Match-Up

This strategy involves analyzing and illustrating primary source documents or passages of text. Several primary sources or passages are given randomly to students. Students first analyze, then create an illustration. Students then analyze each primary source or passage and attempt to match the posted illustrations to the correct text. After analyzing each illustration, students should be able to summarize the texts and have a deeper understanding of the texts.

LEARN.**K20**CENTER.OU.EDU/STRATEGIES

MASTERPIECE MATCH-UP

Summary

Use this strategy when students need to analyze multiple texts, such as primary source documents, excerpts, or quotes. Select 5–7 texts related to one topic that you would like the class to analyze. Label each one with a letter, and then create a packet that contains all of the selected texts for each student.

Procedure

1. Have students read their packet and take notes to summarize each text.
2. Place students in groups of 2–3.
3. Randomly assign one text to each group.
4. Instruct groups to create an illustration by hand or digitally that represents the text that they were given.
5. Post each illustration in the classroom (or upload it digitally to a Google Slides presentation or to a website like Padlet).
6. Using their packet and notes for reference, have students view all of the illustrations and guess which illustrations go with each text. Tell students to write short notes that explain why they believe an illustration matches a text.
7. Have a class discussion about how their students illustrated each text.

Sandoval, A. [@historysandoval]. (2021, July 20). Masterpiece Match-up 1. Ss are given different passages or primary sources 2. Ss then sketch or paint what their passage/source reveals. <https://twitter.com/historysandoval/status/1417528992144388097>