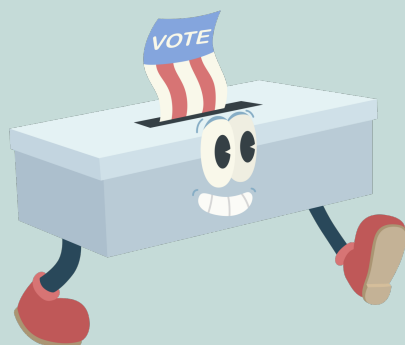


INSTRUCTIONAL STRATEGIES



Walking Vote

Students use movement to select between two options. Students move to either side of the learning space to indicate which option they choose and can then discuss their selection with others who chose the same option.

LEARN.[K20CENTER.OU.EDU/STRATEGIES](https://learn.k20center.ou.edu/strategies)

WALKING VOTE

Summary

The Walking Vote strategy is designed to incorporate movement into class discussions. This strategy can be used as an activator as students are entering the learning space to create groups to be used for the full period or anywhere in the lesson to provide a movement break and quickly group or re-group students. It can be used in a single round with one set of options and a longer discussion period, or multiple rounds with several sets of options with shorter discussion periods.

Procedure

1. Choose a topic of discussion that has two either-or options.
2. Have students begin by standing in the middle of the space.
3. Share with students the two options and indicate which side of the space they should move to for each option.
 1. Optional: Create a slide that is divided in half between the two options with an arrow pointing to which side of the room will correspond to each option
4. Give students 30 seconds to consider the options and walk to the side of the space that corresponds to the option they want to select.
 1. Depending on the discussion, it may be appropriate to use the middle of the room to indicate selecting neither option or both options.
5. At the end of 30 seconds, instruct students to discuss why they chose that option with others on the same side.

Accessibility Accommodation:

Students who need mobility accommodation can remain in the middle of the room and point to indicate which side they would select.

Kleinjan, D. (2020). Movement matters: The importance of incorporating movement in the classroom [Literature review]. NWCommons.
https://nwcommons.nwciowa.edu/education_masters/211/