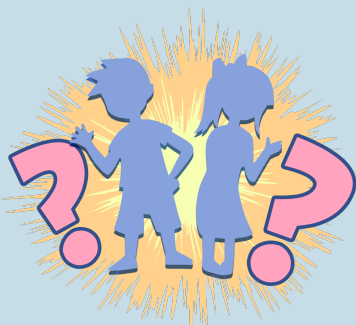


INSTRUCTIONAL STRATEGIES



Who Are You?

The "Who Are You?" strategy is a fast-paced partner activity where students take turns rapidly asking and answering identity questions. This reflective strategy helps students identify nouns that describe who they are in their everyday lives.

LEARN.**K20**CENTER.OU.EDU/STRATEGIES

WHO ARE YOU?

Summary

The strategy serves as an engaging warm-up that can be used in most classrooms or professional learning experiences. Partners take turns asking each other "Who are you?" and responding with one-word noun responses.

Procedure

1. Students pair up and sit or stand facing each other.
Designate one student as Partner A and one as Partner B.
2. Set a timer for 60 seconds.
3. Partner A begins continuously asking the question, "Who are you?" for the full 60 seconds.

Keep the energy high and maintain eye contact.
4. Partner B will answer with **one-word nouns only** (no adjectives or phrases).
 - Examples: "Student," "Sister," "Athlete," "Friend," "Leader."
 - Give a different noun each time the question is asked.
 - Think quickly and don't overthink the answers.
5. End Round One when the timer goes off; students should STOP.
6. **Reset the Timer** for another 60 seconds. Partners switch roles and complete steps 3-5 for Round Two.

K20 Center. (n.d.). Uplifting classrooms. Creating uplifting classroom environments-K20 Center. <https://k20center.ou.edu/uplifting-classroom/>