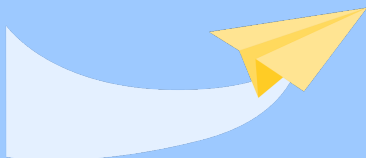
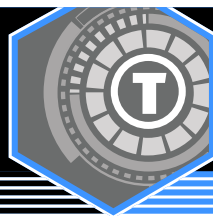


**TECH  
TOOLS**

## **PhET Interactive Simulations**

The PhET Interactive Simulations project is a free STEM resource that provides digital science and math simulations of real-world phenomena. Each of the research-based simulations provides interactive elements that encourage inquiry and exploration.

LEARN.**K20**CENTER.OU.EDU/STRATEGIES

## PHET INTERACTIVE SIMULATIONS

### Summary

PhET simulations animate what is invisible to the eye through the use of graphics and intuitive controls such as click-and-drag manipulation, sliders, and radio buttons. These simulations also offer measurement instruments including rulers, stop-watches, voltmeters, and thermometers. As you manipulate these interactive tools, responses are immediately animated to illustrate cause-and-effect relationships. PhET offers several physics, chemistry, math, earth science, and biology simulations.

### Procedure

1. Navigate to [PhET Interactive Simulations](https://phet.colorado.edu/) at [phet.colorado.edu](https://phet.colorado.edu/).
2. Select "Explore our sims."
3. Browse by subject or select a filter.
4. Select a simulation.
5. Select play or the large sim image to load the simulation.
6. Use the provided tools to explore the phenomenon.

University of Colorado Boulder. (n.d.). Phet Interactive Simulations. Retrieved February 10, 2022, from <https://phet.colorado.edu/>